

TABASCO

---RED FEDERAL LIBRE---

1 Coatzacoalcos - Villahermosa	MEX-180
2 El Suspiro - Tenosique	MEX-203
3 Malpaso - El Bellote	MEX-187
4 Tenosique - El Ceibo	MEX-203
5 Villahermosa - Cd. del Carmen	MEX-180
6 Villahermosa - Escopetazo	MEX-195
7 Villahermosa - Francisco Escárcega	MEX-186-307

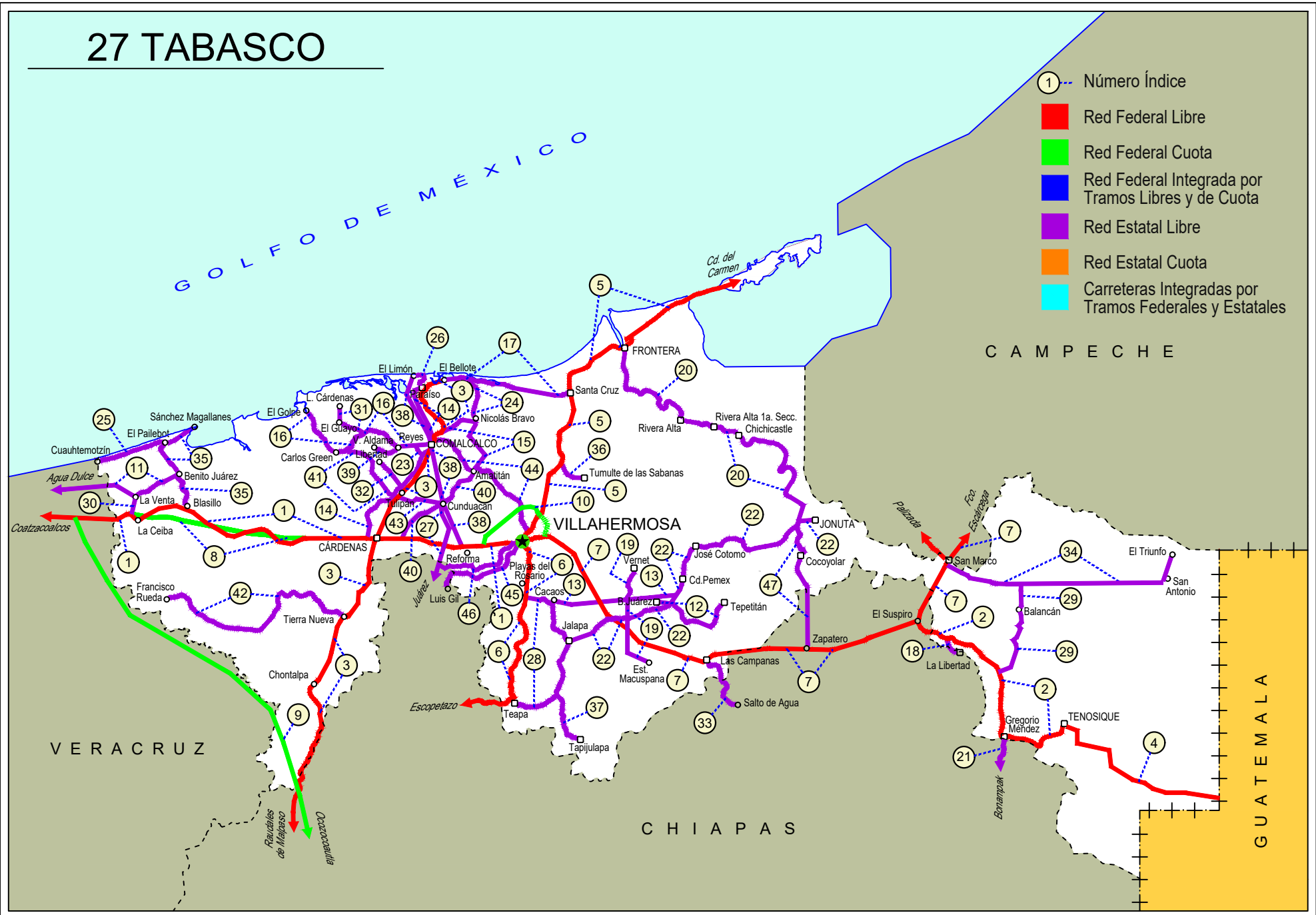
---RED FEDERAL DE CUOTA---

8 Ent. Agua Dulce - Cárdenas (Cuota)	MEX-180D
9 Las Choapas - Ocozocoautla (Cuota)	MEX-187D
10 Libramiento de Villahermosa (Cuota)	MEX-180D

---RED ESTATAL LIBRE---

11 Benito Juárez - Agua Dulce	TAB-VER
12 Benito Juárez - Tepetitán	TAB
13 Cacaos - La Granja	TAB
14 Cárdenas - Paraíso	TAB
15 Chichicapa - Ent. La Libertad	TAB
16 Comalcalco - El Golpe	TAB
17 El Bellote - Santa Cruz	TAB
18 Ent. Emiliano Zapata - La Libertad	CHIS-TAB
19 Estación Macuspana - Vernet	TAB-041
20 Frontera - T. C. (Jalapa - Jonuta)	TAB
21 Gregorio Méndez Magaña - Reforma de Ocampo	CHIS
22 Jalapa - Jonuta	TAB
23 Libramiento Sur de Comalcalco	TAB
24 Nicolás Bravo - T. C. (El Bellote - Santa Cruz)	TAB
25 Pailebot - Cuauhtemotzin	TAB
26 Paraíso - El Limón	TAB
27 Paso de Cunduacán - Estación Juárez	TAB-CHIS
28 Playas del Rosario - Teapa	TAB-001
29 Ramal a Balancan	TAB
30 Ramal a La Venta	TAB
31 Ramal a Lázaro Cárdenas	TAB
32 Ramal a Libertad	TAB
33 Ramal a Salto del Agua	TAB-CHIS
34 Ramal a San Antonio	TAB
35 Ramal a Sánchez Magallanes	TAB
36 Ramal a Tamulte de Las Sabanas	TAB
37 Ramal a Tapijulapa	TAB
38 Reforma - Dos Bocas	TAB
39 Reyes Hernández - Villa Aldama	TAB
40 Samaria - Amatlán	TAB
41 T. C. (Cárdenas - Paraíso) - Carlos Green	TAB
42 Tierra Nueva - Francisco Rueda	TAB
43 Tulipán - Cunduacán	TAB
44 Villahermosa - Comalcalco	TAB
45 Villahermosa - Luis Gil Pérez	TAB
46 Villahermosa - T. C. (P. de Cunduacán - Estación Juárez)	TAB
47 Zapatero - T. C. (Jalapa - Jonuta)	CHIS-TAB

27 TABASCO



TABASCO

1 CARR: Coatzacoalcos - Villahermosa

CLAVE: 00528

RUTA: MEX-180

AÑO: 2025

LUGAR	ESTACION				CLASIFICACION VEHICULAR EN PORCIENTO										COORDENADAS					
	KM	TE	SC	TDPA	M	A	B	C2	C3	T3S2	T3S3	T3S2R4	OTROS	A	B	C	K'	D	LATITUD	LONGITUD
Coatzacoalcos	0.00																			
Plaza de Cobro Pte. Coatzacoalcos	3.00	1	0	23619	5.5	79.0	1.8	4.6	2.1	2.0	0.9	3.3	0.8	84.5	1.8	13.7	0.080	0.551	18.121665	-94.425138
X. C. Pajaritos - Nanchital	6.53	1	0	19541	6.3	79.0	2.8	5.8	1.3	1.3	0.8	2.1	0.6	85.3	2.8	11.9	0.080	0.578	18.106284	-94.398744
X. C. Pajaritos - Nanchital	6.53	3	0	12017	6.0	71.1	3.9	8.4	1.7	2.8	1.3	3.9	0.9	77.1	3.9	19.0	0.094	0.626	18.094750	-94.377774
T. Der. Puente Antonio Dovalí Jaimes	14.60	1	0	10542	6.2	72.6	4.8	6.3	2.3	2.7	1.1	3.2	0.8	78.8	4.8	16.4	0.079	0.562	18.076004	-94.323813
T. Der. Puente Antonio Dovalí Jaimes	14.60	3	1	10849	4.0	57.7	4.4	5.1	3.9	16.1	1.3	6.8	0.7	61.7	4.4	33.9	0.057	0.505	18.071107	-94.304174
T. Der. Puente Antonio Dovalí Jaimes	14.60	3	2	10783	4.1	56.8	4.6	5.3	4.1	15.9	1.6	6.7	0.9	60.9	4.6	34.5	0.058	0.505	18.070679	-94.305552
T. Der. Ocozocoautla	22.20	3	1	7663	7.4	49.7	6.6	5.6	2.6	15.4	3.6	8.1	1.0	57.1	6.6	36.3	0.062	0.512	18.068137	-94.234424
T. Der. Ocozocoautla	22.20	3	2	7357	7.0	51.0	6.3	5.6	2.4	15.6	3.1	8.0	1.0	58.0	6.3	35.7	0.058	0.512	18.068338	-94.234571
T. Der. Las Choapas	36.00	3	1	8359	4.4	59.7	5.5	3.9	3.2	14.1	2.6	6.1	0.5	64.1	5.5	30.4	0.064	0.504	18.052021	-94.121211
T. Der. Las Choapas	36.00	3	2	8949	5.0	57.7	5.8	3.8	3.5	14.7	2.2	6.6	0.7	62.7	5.8	31.5	0.066	0.504	18.052583	-94.120938
Lim. Edos. Term. Ver. Ppia. Tab.	41.48																			
T. Izq. Villa La Venta	47.26	3	0	2972	11.2	74.2	2.1	3.3	2.6	5.0	1.4	0.1	0.1	85.4	2.1	12.5	0.089	0.508	18.055222	-94.029431
X. C. Agua Dulce - Cárdenas (Cuota)	51.80	3	0	3460	11.0	74.3	2.5	2.9	1.8	5.4	1.8	0.3	0.0	85.3	2.5	12.2	0.080	0.525	18.058271	-93.992826
T. Izq. Campo Magallanes	65.20	1	0	3232	10.8	74.9	2.3	3.0	1.9	5.2	1.4	0.5	0.0	85.7	2.3	12.0	0.084	0.531	18.076791	-93.887110
T. Izq. Campo Magallanes	65.20	3	0	4381	8.4	74.9	2.6	4.2	1.9	5.8	1.6	0.6	0.0	83.3	2.6	14.1	0.082	0.571	18.070479	-93.869398
X. C. Agua Dulce - Cárdenas (Cuota)	78.80	1	0	4168	7.1	77.2	3.5	3.1	1.9	4.9	1.4	0.8	0.1	84.3	3.5	12.2	0.077	0.525	18.033131	-93.816433
X. C. Agua Dulce - Cárdenas (Cuota)	78.80	3	0	4017	12.6	72.0	3.0	3.9	2.0	4.9	1.4	0.2	0.0	84.6	3.0	12.4	0.072	0.583	18.024173	-93.797237
Pico de Oro	88.50	1	0	5265	10.6	74.8	2.4	3.6	1.8	4.5	1.5	0.8	0.0	85.4	2.4	12.2	0.084	0.530	18.017319	-93.692428
Pico de Oro	88.50	3	0	4752	8.2	79.5	2.3	3.0	1.5	4.1	1.2	0.2	0.0	87.7	2.3	10.0	0.075	0.525	18.018989	-93.663365
X. C. Agua Dulce - Cárdenas (Cuota)	104.00	1	0	8120	7.8	76.6	2.4	5.0	1.6	4.4	1.3	0.6	0.3	84.4	2.4	13.2	0.082	0.531	17.986600	-93.574318
X. C. Agua Dulce - Cárdenas (Cuota)	104.00	3	1	11227	5.4	61.7	4.3	5.7	3.0	10.8	2.3	5.8	1.0	67.1	4.3	28.6	0.067	0.525	17.998798	-93.528146
X. C. Agua Dulce - Cárdenas (Cuota)	104.00	3	2	11267	4.9	62.2	4.7	5.6	2.9	10.9	2.1	5.7	1.0	67.1	4.7	28.2	0.067	0.525	17.999098	-93.527720
Cárdenas	122.10	1	1	15249	6.7	66.6	4.3	4.7	2.5	8.5	2.1	3.7	0.9	73.3	4.3	22.4	0.083	0.536	17.999108	-93.400063
Cárdenas	122.10	1	2	16534	6.9	65.5	4.2	4.9	2.6	8.7	2.1	4.3	0.8	72.4	4.2	23.4	0.074	0.536	17.999278	-93.399922
Cárdenas	122.10	3	1	17343	3.8	71.2	3.6	4.7	3.3	7.2	1.8	3.5	0.9	75.0	3.6	21.4	0.076	0.508	17.999027	-93.338888
Cárdenas	122.10	3	2	16785	4.1	71.5	3.4	4.6	3.5	7.4	1.5	3.1	0.9	75.6	3.4	21.0	0.073	0.508	17.999199	-93.338929
T. Izq. Samaria	132.50	3	1	16467	5.7	65.8	3.2	7.6	3.8	8.8	2.0	2.7	0.4	71.5	3.2	25.3	0.079	0.568	17.995168	-93.273158
T. Izq. Samaria	132.50	3	2	16201	5.7	66.0	3.4	7.2	3.6	8.6	1.9	3.0	0.6	71.7	3.4	24.9	0.073	0.568	17.999670	-93.265477
Cucuyulapa	134.80	1	1	17601	3.7	70.0	3.1	6.0	2.1	8.2	2.2	3.8	0.9	73.7	3.1	23.2	0.078	0.533	17.999034	-93.259284
Cucuyulapa	134.80	1	2	18153	3.6	68.8	3.9	6.1	2.1	8.1	2.4	4.1	0.9	72.4	3.9	23.7	0.073	0.533	17.999185	-93.259475
Cucuyulapa	134.80	3	1	16521	3.8	68.9	3.4	6.3	2.2	9.0	1.8	3.5	1.1	72.7	3.4	23.9	0.073	0.510	17.999029	-93.244588
Cucuyulapa	134.80	3	2	17036	3.6	68.4	3.5	6.1	2.3	8.9	1.9	4.1	1.2	72.0	3.5	24.5	0.070	0.510	17.999193	-93.244555
T. Der. La Reforma	148.80	1	1	22026	4.0	68.8	3.7	8.0	3.1	6.4	2.1	3.1	0.8	72.8	3.7	23.5	0.074	0.512	17.976270	-93.145197
T. Der. La Reforma	148.80	1	2	22515	4.0	70.9	3.8	6.5	3.7	6.6	1.7	2.1	0.7	74.9	3.8	21.3	0.076	0.512	17.976417	-93.145122

TABASCO

1 CARR: Coatzacoalcos - Villahermosa

CLAVE: 00528

RUTA: MEX-180

AÑO: 2025

LUGAR	ESTACION				CLASIFICACION VEHICULAR EN PORCIENTO										COORDENADAS					
	KM	TE	SC	TDPA	M	A	B	C2	C3	T3S2	T3S3	T3S2R4	OTROS	A	B	C	K'	D	LATITUD	LONGITUD
T. Der. La Reforma	148.80	3	1	32231	4.3	79.4	2.3	4.6	1.7	4.3	0.9	2.2	0.3	83.7	2.3	14.0	0.064	0.533	17.973523	-93.118192
T. Der. La Reforma	148.80	3	2	33333	4.2	78.9	2.2	4.4	1.9	4.5	1.1	2.4	0.4	83.1	2.2	14.7	0.072	0.533	17.973920	-93.120909
T. C. Libramiento de Villahermosa (Cuota)	159.30	1	1	30248	6.1	79.3	2.3	6.3	1.4	2.0	0.8	1.2	0.6	85.4	2.3	12.3	0.084	0.518	17.981345	-93.027214
T. C. Libramiento de Villahermosa (Cuota)	159.30	1	2	29023	6.2	79.2	2.5	6.2	1.5	2.2	0.7	1.1	0.4	85.4	2.5	12.1	0.082	0.518	17.981554	-93.027006
Villahermosa	171.15																			

2 CARR: El Suspiro - Tenosique

CLAVE: 00276

RUTA: MEX-203

AÑO: 2025

LUGAR	ESTACION				CLASIFICACION VEHICULAR EN PORCIENTO										COORDENADAS					
	KM	TE	SC	TDPA	M	A	B	C2	C3	T3S2	T3S3	T3S2R4	OTROS	A	B	C	K'	D	LATITUD	LONGITUD
Ent. El Suspiro	0.00	3	0	6562	10.4	73.6	1.4	4.5	6.7	1.4	0.5	1.3	0.2	84.0	1.4	14.6	0.067	0.540	17.749504	-91.813448
Lim. Edos. Term. Chis. Ppia. Tab.	8.00																			
Emiliano Zapata	8.61	3	0	6334	10.5	77.4	1.0	5.1	2.1	2.0	0.7	0.6	0.6	87.9	1.0	11.1	0.079	0.518	17.727424	-91.756587
T. Der. La Libertad	12.10	3	0	3676	10.8	71.7	2.2	4.9	5.8	1.4	1.3	1.4	0.5	82.5	2.2	15.3	0.076	0.543	17.723804	-91.739477
T. Izq. Balancán	32.60	1	0	4056	5.6	76.2	4.9	7.1	1.4	1.9	1.3	1.2	0.4	81.8	4.9	13.3	0.087	0.632	17.633704	-91.602107
T. Izq. Balancán	32.60	3	0	2436	6.8	76.7	3.0	5.5	2.5	2.5	2.0	0.9	0.1	83.5	3.0	13.5	0.092	0.604	17.630612	-91.600875
Estación Zapata	53.00	1	0	2642	7.6	81.4	1.9	3.6	2.8	1.8	0.4	0.3	0.2	89.0	1.9	9.1	0.067	0.542	17.458836	-91.597922
Estación Zapata	53.00	3	0	3940	7.3	76.0	1.5	3.5	5.2	2.2	2.1	1.5	0.7	83.3	1.5	15.2	0.072	0.532	17.456396	-91.594855
Tenosique	75.30																			

3 CARR: Malpaso - El Bellote

CLAVE: 00137

RUTA: MEX-187

AÑO: 2025

LUGAR	ESTACION				CLASIFICACION VEHICULAR EN PORCIENTO										COORDENADAS					
	KM	TE	SC	TDPA	M	A	B	C2	C3	T3S2	T3S3	T3S2R4	OTROS	A	B	C	K'	D	LATITUD	LONGITUD
Presa Malpaso	0.00																			
X. C. Las Choapas - Ocozocoautla Cuota	15.50	1	0	410	37.7	54.2	0.5	3.9	3.5	0.0	0.1	0.1	0.0	91.9	0.5	7.6	0.110	0.578	17.248680	-93.563727
Lim. Edos. Term. Chis. Ppia. Tab.	43.99																			
Lim. Edos. Term. Tab. Ppia. Chis.	44.59																			
Lim. Edos. Term. Chis. Ppia. Tab.	45.26																			
Lim. Edos. Term. Tab. Ppia. Chis.	45.63																			
T. Der. Pichucalco	51.80	3	0	714	32.1	58.5	1.0	5.0	2.3	0.6	0.3	0.2	0.0	90.6	1.0	8.4	0.245	0.594	17.476355	-93.503486
Lim. Edos. Term. Chis. Ppia. Tab.	55.04																			
Entronque Grano de Oro	65.60	1	0	1719	29.5	64.3	1.1	3.4	0.6	0.7	0.3	0.1	0.0	93.8	1.1	5.1	0.143	0.500	17.588349	-93.531370
Macabil (La Estrella)	70.12	1	0	4698	14.5	73.2	2.7	4.3	1.4	2.7	0.7	0.4	0.1	87.7	2.7	9.6	0.089	0.504	17.605158	-93.518837
Estación Chontalpa	75.69	1	0	6176	15.9	73.0	2.2	4.7	1.6	1.4	0.5	0.5	0.2	88.9	2.2	8.9	0.079	0.538	17.647557	-93.488843

TABASCO

3 CARR: Malpaso - El Bellote

CLAVE: 00137

RUTA: MEX-187

AÑO: 2025

LUGAR	ESTACION				CLASIFICACION VEHICULAR EN PORCIENTO										COORDENADAS					
	KM	TE	SC	TDPA	M	A	B	C2	C3	T3S2	T3S3	T3S2R4	OTROS	A	B	C	K'	D	LATITUD	LONGITUD
Estación Chontalpa	75.69	3	0	7889	12.5	77.6	1.9	4.2	1.2	1.4	0.4	0.7	0.1	90.1	1.9	8.0	0.077	0.520	17.675820	-93.476012
T. Izq. Francisco Rueda	90.49	1	0	7558	11.7	77.0	1.9	5.4	1.2	1.7	0.4	0.6	0.1	88.7	1.9	9.4	0.083	0.588	17.786975	-93.439544
T. Izq. Francisco Rueda	90.49	3	0	10329	14.4	78.5	1.3	2.3	0.8	1.7	0.5	0.4	0.1	92.9	1.3	5.8	0.085	0.563	17.793193	-93.432074
Huimanguillo	98.03	1	1	7608	13.7	78.1	1.8	2.5	1.1	1.4	0.6	0.6	0.2	91.8	1.8	6.4	0.081	0.529	17.819019	-93.401796
Huimanguillo	98.03	1	2	7910	14.4	77.8	1.6	2.8	0.9	1.1	0.4	0.7	0.3	92.2	1.6	6.2	0.078	0.529	17.819077	-93.401875
Huimanguillo	98.03	3	1	7250	14.4	77.6	1.8	2.6	1.2	1.3	0.5	0.3	0.3	92.0	1.8	6.2	0.088	0.507	17.853030	-93.397045
Huimanguillo	98.03	3	2	7342	14.3	77.2	2.1	3.0	0.9	1.2	0.5	0.5	0.3	91.5	2.1	6.4	0.094	0.507	17.853043	-93.397130
Cárdenas	117.56	1	0	17620	13.3	79.2	1.0	2.8	1.1	1.5	0.5	0.4	0.2	92.5	1.0	6.5	0.085	0.501	17.943906	-93.362740
Cárdenas	117.56	3	0	19258	14.2	76.8	1.0	4.5	0.9	1.2	0.6	0.5	0.3	91.0	1.0	8.0	0.078	0.551	18.016597	-93.368623
Tulipán	134.70	3	0	11063	6.9	79.2	1.5	6.9	1.0	2.7	1.2	0.3	0.3	86.1	1.5	12.4	0.082	0.503	18.127727	-93.290236
T. Der. Cunduacán	141.70	1	0	10299	6.2	78.9	1.5	8.2	1.3	2.5	1.0	0.3	0.1	85.1	1.5	13.4	0.079	0.593	18.140282	-93.271341
T. Der. Cunduacán	141.70	3	0	7706	6.4	80.4	1.4	7.9	1.1	1.8	0.8	0.2	0.0	86.8	1.4	11.8	0.091	0.606	18.145491	-93.267682
T. Der. Jalpa	153.50	1	0	15475	10.6	76.4	1.3	7.3	1.2	1.2	1.0	0.5	0.5	87.0	1.3	11.7	0.078	0.580	18.241577	-93.210411
T. Der. Jalpa	153.50	3	1	13045	10.1	79.3	1.2	6.1	0.9	0.6	0.9	0.5	0.4	89.4	1.2	9.4	0.084	0.564	18.249012	-93.213565
T. Der. Jalpa	153.50	3	2	12806	10.3	79.2	1.4	5.9	1.1	0.5	0.8	0.5	0.3	89.5	1.4	9.1	0.091	0.564	18.248939	-93.213638
Paraíso	176.85	1	1	17346	6.0	88.1	1.2	3.1	0.8	0.3	0.1	0.2	0.2	94.1	1.2	4.7	0.130	0.691	18.377641	-93.221899
Paraíso	176.85	1	2	17635	5.9	88.3	1.3	3.1	0.7	0.4	0.1	0.1	0.1	94.2	1.3	4.5	0.111	0.691	18.377647	-93.221975
Paraíso	176.85	3	1	15219	10.0	78.3	1.1	5.4	1.9	1.8	0.7	0.5	0.3	88.3	1.1	10.6	0.100	0.623	18.410005	-93.195866
Paraíso	176.85	3	2	15329	10.1	78.2	1.2	5.6	2.1	1.3	0.6	0.5	0.4	88.3	1.2	10.5	0.082	0.623	18.410025	-93.195959
Ceiba	182.00	3	0	13047	10.5	77.7	0.5	3.4	1.4	3.9	1.2	0.6	0.8	88.2	0.5	11.3	0.079	0.530	18.422622	-93.163265
El Bellote	185.47																			

4 CARR: Tenosique - El Ceibo

CLAVE:

RUTA: MEX-203

AÑO: 2025

LUGAR	ESTACION				CLASIFICACION VEHICULAR EN PORCIENTO										COORDENADAS					
	KM	TE	SC	TDPA	M	A	B	C2	C3	T3S2	T3S3	T3S2R4	OTROS	A	B	C	K'	D	LATITUD	LONGITUD
Tenosique	0.00	3	0	1438	16.0	77.9	1.4	3.4	0.4	0.4	0.2	0.3	0.0	93.9	1.4	4.7	0.093	0.507	17.430731	-91.387833
El Ceibo	58.00	1	0	588	38.7	57.4	0.6	2.7	0.4	0.2	0.0	0.0	0.0	96.1	0.6	3.3	0.107	0.571	17.263321	-90.998136

5 CARR: Villahermosa - Cd. del Carmen

CLAVE: 00064

RUTA: MEX-180

AÑO: 2025

LUGAR	ESTACION				CLASIFICACION VEHICULAR EN PORCIENTO										COORDENADAS					
	KM	TE	SC	TDPA	M	A	B	C2	C3	T3S2	T3S3	T3S2R4	OTROS	A	B	C	K'	D	LATITUD	LONGITUD
Villahermosa	0.00																			
T. Izq. Cd. Industrial	4.30	3	1	32142	6.5	87.7	0.8	1.3	1.5	0.7	0.3	0.9	0.3	94.2	0.8	5.0	0.082	0.571	18.037223	-92.901484

TABASCO

5 CARR: Villahermosa - Cd. del Carmen

CLAVE: 00064

RUTA: MEX-180

AÑO: 2025

LUGAR	ESTACION				CLASIFICACION VEHICULAR EN PORCIENTO										COORDENADAS					
	KM	TE	SC	TDPA	M	A	B	C2	C3	T3S2	T3S3	T3S2R4	OTROS	A	B	C	K'	D	LATITUD	LONGITUD
T. Izq. Cd. Industrial	4.30	3	2	31596	6.1	88.7	0.9	1.5	1.1	0.6	0.1	0.8	0.2	94.8	0.9	4.3	0.098	0.571	18.036556	-92.901679
X. C. Libramiento de Villahermosa	8.10	3	1	23572	5.5	87.2	1.3	1.7	0.8	1.9	0.5	0.8	0.3	92.7	1.3	6.0	0.085	0.644	18.062948	-92.882166
X. C. Libramiento de Villahermosa	8.10	3	2	26281	5.4	86.7	1.3	2.0	1.2	1.8	0.4	1.0	0.2	92.1	1.3	6.6	0.106	0.644	18.063012	-92.882213
Macultepec	18.60	1	1	19328	7.7	79.3	1.7	3.4	1.5	3.6	0.9	1.4	0.5	87.0	1.7	11.3	0.069	0.516	18.141596	-92.864651
Macultepec	18.60	1	2	19444	8.1	79.4	1.7	2.8	1.5	3.6	1.0	1.4	0.5	87.5	1.7	10.8	0.075	0.516	18.141611	-92.864736
Macultepec	18.60	3	1	6716	3.7	74.3	4.2	5.9	1.6	5.8	1.4	2.5	0.6	78.0	4.2	17.8	0.077	0.529	18.167374	-92.858479
Macultepec	18.60	3	2	6628	3.7	74.7	4.1	6.0	1.5	5.9	1.0	2.4	0.7	78.4	4.1	17.5	0.078	0.529	18.167375	-92.858517
El Espino	33.20	1	0	10845	2.0	70.6	4.1	6.0	2.4	8.5	2.1	3.5	0.8	72.6	4.1	23.3	0.074	0.559	18.205937	-92.822772
El Espino	33.20	3	0	9990	3.5	69.8	4.4	5.2	2.4	8.2	1.9	3.4	1.2	73.3	4.4	22.3	0.070	0.521	18.256728	-92.831691
T. Izq. Simon Sarlat	45.00	3	0	10294	4.3	73.4	3.8	3.4	1.8	8.2	1.1	3.2	0.8	77.7	3.8	18.5	0.073	0.582	18.349722	-92.789805
T. Izq. El Bellote	49.67	3	0	9936	5.6	67.9	4.3	6.2	1.7	8.5	1.3	3.5	1.0	73.5	4.3	22.2	0.071	0.545	18.394191	-92.798049
T. Izq. Constanca y Venecia	56.10	3	0	10673	7.4	68.0	4.2	5.5	1.5	8.0	1.2	3.3	0.9	75.4	4.2	20.4	0.074	0.535	18.444456	-92.794464
Frontera	74.59	1	0	11539	8.6	69.3	3.1	3.5	2.4	7.6	1.5	3.2	0.8	77.9	3.1	19.0	0.070	0.565	18.512435	-92.649445
Frontera	74.59	3	0	7733	7.7	61.6	5.4	5.0	2.7	9.9	2.1	4.7	0.9	69.3	5.4	25.3	0.065	0.522	18.542329	-92.631797
T. Izq. Escolleras	78.00	3	0	7239	5.8	64.3	6.0	5.4	1.8	9.2	2.2	4.3	1.0	70.1	6.0	23.9	0.065	0.544	18.562275	-92.601545
Puente San Pedro	96.50	3	0	6327	4.1	64.5	6.0	6.3	2.4	9.6	2.4	4.1	0.6	68.6	6.0	25.4	0.062	0.522	18.641252	-92.464243
Lim. Edos. Term. Tab. Ppia. Camp.	99.75																			
Nuevo Campechito	100.00	3	0	6106	3.5	63.0	6.0	6.8	2.0	11.2	2.2	4.8	0.5	66.5	6.0	27.5	0.084	0.505	18.643158	-92.454237
Nuevo Progreso	113.60	1	0	8023	4.3	63.5	4.8	6.2	1.9	11.6	2.3	4.7	0.7	67.8	4.8	27.4	0.065	0.549	18.627053	-92.330123
Nuevo Progreso (2do Acceso)	119.00	1	0	6061	4.3	61.5	4.4	6.5	3.2	12.3	2.3	5.1	0.4	65.8	4.4	29.8	0.080	0.530	18.616709	-92.288474
T. Der. San Antonio Cárdenas (1er Acceso)	121.80	1	0	6957	8.9	59.7	6.4	4.5	2.8	10.5	2.3	4.0	0.9	68.6	6.4	25.0	0.075	0.506	18.618814	-92.247895
T. Der. San Antonio Cárdenas (2do Acceso)	125.20	1	0	7406	4.4	62.3	7.0	4.6	2.2	12.4	2.4	4.2	0.5	66.7	7.0	26.3	0.063	0.501	18.622208	-92.227732
T. Der. San Antonio Cárdenas (2do Acceso)	125.20	3	0	8731	7.2	62.8	5.6	3.9	2.4	11.4	1.9	4.4	0.4	70.0	5.6	24.4	0.059	0.523	18.616829	-92.202319
Puente Zacatal	162.41	1	0	7042	4.5	63.8	5.7	4.5	2.4	11.5	2.3	4.8	0.5	68.3	5.7	26.0	0.065	0.574	18.615205	-91.869790
Puente Zacatal	162.41	2	0	6126	0.9	69.7	3.3	4.4	3.1	10.8	1.5	5.6	0.7	70.6	3.3	26.1	0.077	0.500	18.641814	-92.460301
Cd. del Carmen	167.50																			

6 CARR: Villahermosa - Escopelazo

CLAVE: 00104

RUTA: MEX-195

AÑO: 2025

LUGAR	ESTACION				CLASIFICACION VEHICULAR EN PORCIENTO										COORDENADAS					
	KM	TE	SC	TDPA	M	A	B	C2	C3	T3S2	T3S3	T3S2R4	OTROS	A	B	C	K'	D	LATITUD	LONGITUD
Villahermosa	0.00	3	1	25873	6.2	87.1	0.5	4.0	0.6	0.8	0.3	0.4	0.1	93.3	0.5	6.2	0.086	0.669	17.941239	-92.917981
Villahermosa	0.00	3	2	23692	6.0	87.6	0.6	3.8	0.4	0.7	0.5	0.3	0.1	93.6	0.6	5.8	0.121	0.669	17.941340	-92.917869
Parrilla	10.00	1	1	20260	5.5	87.6	0.7	4.2	0.5	0.7	0.4	0.3	0.1	93.1	0.7	6.2	0.084	0.670	17.913604	-92.923293
Parrilla	10.00	1	2	18900	5.8	86.8	0.5	4.4	0.6	0.9	0.5	0.3	0.2	92.6	0.5	6.9	0.107	0.670	17.913586	-92.923209

TABASCO

6 CARR: Villahermosa - Escopetazo

CLAVE: 00104

RUTA: MEX-195

AÑO: 2025

LUGAR	ESTACION				CLASIFICACION VEHICULAR EN PORCIENTO										COORDENADAS					
	KM	TE	SC	TDPA	M	A	B	C2	C3	T3S2	T3S3	T3S2R4	OTROS	A	B	C	K'	D	LATITUD	LONGITUD
Parrilla	10.00	3	1	22125	4.2	88.7	0.5	3.7	1.0	0.9	0.4	0.4	0.2	92.9	0.5	6.6	0.075	0.621	17.887068	-92.922529
Parrilla	10.00	3	2	22163	4.0	88.0	0.8	4.0	1.2	1.0	0.3	0.6	0.1	92.0	0.8	7.2	0.109	0.621	17.887143	-92.922461
T. Izq. Subte. García	20.00	3	1	8032	11.5	79.9	0.6	3.6	1.3	1.7	0.8	0.4	0.2	91.4	0.6	8.0	0.071	0.513	17.825620	-92.929149
T. Izq. Subte. García	20.00	3	2	8795	11.7	79.1	0.8	3.5	1.4	1.8	0.9	0.5	0.3	90.8	0.8	8.4	0.069	0.513	17.825650	-92.929114
La Arena	44.00	1	0	6466	8.5	78.1	2.0	4.4	1.4	3.7	1.3	0.5	0.1	86.6	2.0	11.4	0.078	0.582	17.653450	-92.959142
T. Izq. Teapa	54.80	1	0	11174	8.9	75.4	1.3	6.1	1.0	5.7	0.9	0.4	0.3	84.3	1.3	14.4	0.079	0.560	17.571853	-92.956729
T. Izq. Teapa	54.80	3	0	6560	8.0	80.1	1.1	6.1	0.9	2.5	0.7	0.3	0.3	88.1	1.1	10.8	0.076	0.510	17.568347	-92.964819
Lim. Edos. Term. Tab. Ppia. Chis.	61.42																			
Pichucalco	76.00	1	0	3740	9.2	83.4	0.4	4.0	0.8	1.5	0.6	0.1	0.0	92.6	0.4	7.0	0.087	0.505	17.519893	-93.101856
Pichucalco	76.00	3	0	4639	10.7	81.9	0.2	4.0	0.7	1.8	0.5	0.1	0.1	92.6	0.2	7.2	0.083	0.570	17.497632	-93.102707
Solusuchiapa	112.00	1	0	1834	7.8	84.6	0.8	3.0	1.9	0.2	1.5	0.2	0.0	92.4	0.8	6.8	0.084	0.526	17.428156	-93.038305
Solusuchiapa	112.00	3	0	1793	9.9	81.8	0.5	4.0	1.9	1.0	0.7	0.2	0.0	91.7	0.5	7.8	0.102	0.588	17.420298	-93.027027
Rayón	146.00	1	0	2563	9.3	83.7	0.6	3.6	0.7	1.6	0.2	0.2	0.1	93.0	0.6	6.4	0.092	0.506	17.205359	-93.011837
Jitotol	197.79	1	0	2394	5.1	87.1	0.7	3.0	2.0	1.1	0.6	0.4	0.0	92.2	0.7	7.1	0.092	0.545	17.081145	-92.867790
Jitotol	197.79	3	0	3279	5.7	88.9	0.7	2.0	1.7	0.4	0.3	0.2	0.1	94.6	0.7	4.7	0.105	0.545	17.052729	-92.857025
Bochil	211.00	1	0	5000	5.2	86.8	1.4	2.2	1.8	1.3	0.3	0.8	0.2	92.0	1.4	6.6	0.084	0.545	16.988561	-92.876244
Soyaló	229.00	3	0	3201	3.3	88.8	1.3	2.8	1.8	1.1	0.6	0.3	0.0	92.1	1.3	6.6	0.090	0.571	16.879764	-92.917563
Ixtapa	247.00	1	0	4564	2.9	89.2	1.3	2.1	2.4	1.4	0.5	0.2	0.0	92.1	1.3	6.6	0.089	0.502	16.815476	-92.908057
Escopetazo	259.00	1	0	3690	2.7	89.3	1.2	2.8	1.7	1.3	0.5	0.5	0.0	92.0	1.2	6.8	0.091	0.509	16.756061	-92.934978

7 CARR: Villahermosa - Francisco Escárcega

CLAVE: 00092

RUTA: MEX-186-307

AÑO: 2025

LUGAR	ESTACION				CLASIFICACION VEHICULAR EN PORCIENTO										COORDENADAS					
	KM	TE	SC	TDPA	M	A	B	C2	C3	T3S2	T3S3	T3S2R4	OTROS	A	B	C	K'	D	LATITUD	LONGITUD
Villahermosa	0.00	3	1	16682	3.7	84.5	0.8	6.0	0.5	2.4	0.4	1.4	0.3	88.2	0.8	11.0	0.079	0.515	18.001034	-92.890710
Villahermosa	0.00	3	2	16228	4.1	84.1	1.0	5.7	0.8	2.0	0.9	1.2	0.2	88.2	1.0	10.8	0.077	0.515	18.001136	-92.890710
T. C. Libramiento de Villahermosa (Cuota)	3.77																			
T. Izq. Aeropuerto (Baja)	12.00	1	1	2202	16.8	69.1	1.9	5.5	2.0	1.3	1.1	1.5	0.8	85.9	1.9	12.2	0.105	0.547	17.984972	-92.829643
T. Izq. Aeropuerto (Alta)	12.00	1	1	17749	5.8	78.8	2.3	5.3	1.4	3.0	1.2	1.6	0.6	84.6	2.3	13.1	0.068	0.547	17.985027	-92.829609
T. Izq. Aeropuerto (Alta)	12.00	1	2	17226	6.3	77.2	1.9	5.9	1.5	3.1	1.4	2.0	0.7	83.5	1.9	14.6	0.073	0.547	17.985088	-92.829539
T. Izq. Aeropuerto (Baja)	12.00	1	2	2441	16.7	68.2	2.0	6.1	2.0	1.3	1.3	1.6	0.8	84.9	2.0	13.1	0.071	0.547	17.985151	-92.829486
Puente Grijalva	17.60	2	1	8370	4.7	78.2	2.5	3.3	2.0	4.6	1.5	2.8	0.4	82.9	2.5	14.6	0.079	0.500	17.947602	-92.785235
Puente Grijalva	17.60	2	2	8370	4.7	78.2	2.5	3.3	2.0	4.6	1.5	2.8	0.4	82.9	2.5	14.6	0.079	0.500	17.947602	-92.785235
X. C. Cacaos - La Granja	32.46	1	1	7032	3.6	77.6	2.8	3.4	2.1	4.9	2.5	2.4	0.7	81.2	2.8	16.0	0.080	0.511	17.832798	-92.719573
X. C. Cacaos - La Granja	32.46	1	2	7557	3.5	77.4	3.1	3.4	2.0	4.8	2.6	2.6	0.6	80.9	3.1	16.0	0.077	0.511	17.832829	-92.719493

TABASCO

7 CARR: Villahermosa - Francisco Escárcega

CLAVE: 00092

RUTA: MEX-186-307

AÑO: 2025

LUGAR	ESTACION				CLASIFICACION VEHICULAR EN PORCIENTO										COORDENADAS					
	KM	TE	SC	TDPA	M	A	B	C2	C3	T3S2	T3S3	T3S2R4	OTROS	A	B	C	K'	D	LATITUD	LONGITUD
X. C. Cacaos - La Granja	32.46	3	1	6534	3.8	74.2	3.4	4.7	1.8	5.0	2.0	4.1	1.0	78.0	3.4	18.6	0.066	0.540	17.817687	-92.711025
X. C. Cacaos - La Granja	32.46	3	2	6246	4.0	74.4	3.4	4.2	2.1	5.0	2.1	3.9	0.9	78.4	3.4	18.2	0.077	0.540	17.817733	-92.710943
X. C. Jalapa - Jonuta	40.00	3	1	6352	3.5	73.6	3.9	5.2	2.0	5.6	2.0	3.4	0.8	77.1	3.9	19.0	0.077	0.528	17.773632	-92.672112
X. C. Jalapa - Jonuta	40.00	3	2	6150	2.9	74.2	3.5	5.1	2.0	5.5	2.2	3.7	0.9	77.1	3.5	19.4	0.078	0.528	17.773705	-92.672039
T. Izq. Macuspana	46.20	1	1	7422	4.0	75.9	2.4	3.5	2.9	5.1	1.9	3.4	0.9	79.9	2.4	17.7	0.070	0.551	17.744222	-92.634273
T. Izq. Macuspana	46.20	1	2	6895	3.8	76.9	2.1	3.4	3.3	4.9	1.6	3.1	0.9	80.7	2.1	17.2	0.075	0.551	17.744298	-92.634219
T. Izq. Macuspana	46.20	3	1	6636	4.6	75.7	2.5	4.0	2.9	5.1	2.1	2.6	0.5	80.3	2.5	17.2	0.096	0.608	17.731817	-92.618416
T. Izq. Macuspana	46.20	3	2	6992	4.4	74.4	2.2	4.1	3.4	5.2	2.3	3.3	0.7	78.8	2.2	19.0	0.079	0.608	17.731880	-92.618356
X. C. Estación Macuspana - Vernet	54.30	1	0	11541	7.2	70.4	2.2	3.7	3.3	6.1	2.2	3.9	1.0	77.6	2.2	20.2	0.068	0.539	17.712830	-92.583689
T. Der. Chivalito (Est. Pino Suárez)	70.00	1	0	12565	7.2	66.4	4.4	5.8	2.2	6.8	2.5	3.8	0.9	73.6	4.4	22.0	0.067	0.548	17.670571	-92.446610
T. Der. Chivalito (Est. Pino Suárez)	70.00	3	1	4716	5.7	70.5	3.1	3.7	2.4	7.3	2.0	4.5	0.8	76.2	3.1	20.7	0.083	0.729	17.666372	-92.424324
T. Der. Chivalito (Est. Pino Suárez)	70.00	3	2	4500	5.4	68.2	3.4	3.9	2.7	8.2	2.2	5.2	0.8	73.6	3.4	23.0	0.115	0.729	17.666206	-92.432461
T. Der. Estación Zopo	71.00	1	0	9495	5.9	66.3	4.4	4.7	2.6	8.0	2.9	4.6	0.6	72.2	4.4	23.4	0.074	0.617	17.672181	-92.415404
T. Der. Estación Zopo	71.00	3	1	4936	5.7	65.8	4.1	4.3	2.9	8.2	3.1	5.0	0.9	71.5	4.1	24.4	0.083	0.515	17.682236	-92.399853
T. Der. Estación Zopo	71.00	3	2	4702	5.5	65.3	4.2	4.4	2.7	8.4	3.3	5.4	0.8	70.8	4.2	25.0	0.093	0.515	17.682265	-92.399877
Lim. Edos. Term. Tab. Ppia. Chis.	76.90																			
T. Izq. Bonanza	88.00	1	0	9272	6.5	64.5	3.3	7.2	2.7	8.1	2.2	4.8	0.7	71.0	3.3	25.7	0.067	0.589	17.698113	-92.268841
T. Izq. Jonuta	101.00	1	0	8736	2.2	69.6	3.0	7.9	2.7	6.9	2.5	4.5	0.7	71.8	3.0	25.2	0.072	0.521	17.698148	-92.145108
T. Izq. Jonuta	101.00	3	0	8209	7.1	64.0	3.3	7.2	2.8	7.4	2.5	5.2	0.5	71.1	3.3	25.6	0.069	0.567	17.697744	-92.128640
X. C. Catazajá - Palenque	114.00	1	0	10345	6.9	65.4	3.2	6.6	2.5	7.9	1.9	5.1	0.5	72.3	3.2	24.5	0.062	0.521	17.707138	-92.026121
X. C. Catazajá - Palenque	114.00	3	0	9170	5.5	66.6	3.1	6.7	2.8	7.7	2.4	4.5	0.7	72.1	3.1	24.8	0.066	0.558	17.722880	-91.976434
T. Der. Emiliano Zapata	134.70	1	0	6771	6.5	64.4	4.7	4.1	3.1	8.5	2.1	5.9	0.7	70.9	4.7	24.4	0.069	0.572	17.770550	-91.837622
T. Der. Emiliano Zapata	134.70	3	0	5087	5.9	65.8	4.8	4.3	3.0	7.7	2.1	5.7	0.7	71.7	4.8	23.5	0.076	0.576	17.785075	-91.822203
Lim. Edos. Term. Chis. Ppia. Tab.	140.70																			
Puente Usumacinta	145.20	2	0	4949	9.1	56.9	3.4	3.5	4.0	12.0	2.3	7.9	0.9	66.0	3.4	30.6	0.079	0.500	17.859905	-91.783654
T. Izq. Palizada	154.05	1	0	4766	7.9	62.0	4.3	2.8	3.0	7.8	2.8	8.7	0.7	69.9	4.3	25.8	0.068	0.634	17.937827	-91.737210
T. Izq. Palizada	154.05	3	0	3704	6.0	55.9	5.9	3.3	3.2	12.9	2.9	9.1	0.8	61.9	5.9	32.2	0.069	0.591	17.945839	-91.730423
Lim. Edos. Term. Tab. Ppia. Camp.	154.60																			
T. Der. Candelaria	233.40	1	0	4152	4.9	56.5	6.4	5.4	2.3	12.2	2.6	8.9	0.8	61.4	6.4	32.2	0.066	0.533	18.370512	-91.203355
T. Der. Felipe Ángeles	253.00	1	0	4761	3.6	61.0	6.0	5.1	2.3	11.6	2.8	6.7	0.9	64.6	6.0	29.4	0.067	0.517	18.504068	-91.106418
T. Izq. Sabancuy	274.10	1	0	5913	6.9	60.4	5.0	5.7	2.5	9.3	2.1	7.1	1.0	67.3	5.0	27.7	0.069	0.501	18.629655	-90.988511
Francisco Escárcega	297.04	1	0	9673	14.5	66.2	2.4	2.8	2.3	6.2	1.4	3.4	0.8	80.7	2.4	16.9	0.072	0.541	18.610039	-90.776466

TABASCO

8 CARR: Ent. Agua Dulce - Cárdenas (Cuota)

CLAVE: 00010

RUTA: MEX-180D

AÑO: 2025

LUGAR	ESTACION				CLASIFICACION VEHICULAR EN PORCIENTO										COORDENADAS					
	KM	TE	SC	TDPA	M	A	B	C2	C3	T3S2	T3S3	T3S2R4	OTROS	A	B	C	K'	D	LATITUD	LONGITUD
T. C. Coatzacoalcos - Villahermosa Oeste	45.60	3	1	5914	4.5	50.0	7.4	4.3	2.7	16.7	4.9	8.6	0.9	54.5	7.4	38.1	0.054	0.551	18.061456	-94.035181
T. C. Coatzacoalcos - Villahermosa Oeste	45.60	3	2	6245	4.6	50.5	7.5	4.3	2.7	16.4	4.7	8.4	0.9	55.1	7.5	37.4	0.069	0.551	18.061744	-94.035346
T. C. Coatzacoalcos - Villahermosa Este	69.50	1	1	5758	6.7	42.1	7.6	5.3	3.0	19.5	4.7	10.2	0.9	48.8	7.6	43.6	0.078	0.693	18.032249	-93.821402
T. C. Coatzacoalcos - Villahermosa Este	69.50	1	2	5639	6.9	42.1	7.4	5.4	2.9	19.8	4.6	9.9	1.0	49.0	7.4	43.6	0.064	0.693	18.032026	-93.821781
Plaza de Cobro La Venta	69.50	2	1	4645	0.5	47.2	3.0	5.0	5.4	21.3	3.4	12.5	1.7	47.7	3.0	49.3	0.081	0.500	18.030572	-93.812914
Plaza de Cobro La Venta	69.50	2	2	4645	0.5	47.2	3.0	5.0	5.4	21.3	3.4	12.5	1.7	47.7	3.0	49.3	0.081	0.500	18.030572	-93.812914
T. C. Coatzacoalcos - Villahermosa Este	69.50	3	1	6609	6.1	46.9	7.5	4.8	3.5	16.8	3.9	9.6	0.9	53.0	7.5	39.5	0.073	0.527	18.028802	-93.803944
T. C. Coatzacoalcos - Villahermosa Este	69.50	3	2	5938	6.9	46.7	6.8	4.9	3.7	16.5	3.8	9.9	0.8	53.6	6.8	39.6	0.062	0.527	18.029084	-93.803917
Ent. Chontalpa	99.11																			

9 CARR: Las Choapas - Ocozocoautla (Cuota)

CLAVE: 00077

RUTA: MEX-187D

AÑO: 2025

LUGAR	ESTACION				CLASIFICACION VEHICULAR EN PORCIENTO										COORDENADAS					
	KM	TE	SC	TDPA	M	A	B	C2	C3	T3S2	T3S3	T3S2R4	OTROS	A	B	C	K'	D	LATITUD	LONGITUD
T. C. Coatzacoalcos - Villahermosa	0.00	3	0	6544	4.4	45.3	9.7	5.8	4.5	15.3	4.5	9.6	0.9	49.7	9.7	40.6	0.068	0.555	18.061502	-94.245557
Plaza de Cobro Las Choapas	16.80	1	0	4977	4.7	55.5	8.2	4.6	3.8	11.4	2.7	8.3	0.8	60.2	8.2	31.6	0.062	0.502	17.953786	-94.176884
Plaza de Cobro Las Choapas	16.80	3	0	3020	4.1	37.4	11.4	6.5	5.9	18.6	3.4	11.7	1.0	41.5	11.4	47.1	0.057	0.607	17.926480	-94.162316
Ent. Nuevo Progreso	62.40	1	0	4340	7.1	39.9	11.7	6.8	3.6	18.2	2.7	9.2	0.8	47.0	11.7	41.3	0.070	0.528	17.670221	-93.869357
Lim. Edos. Term. Ver. Ppia. Tab.	96.68																			
Plaza de Cobro Malpasito	112.70	1	0	3297	1.3	49.9	6.0	11.2	5.3	15.4	3.1	6.8	1.0	51.2	6.0	42.8	0.065	0.591	17.351872	-93.587621
Plaza de Cobro Malpasito	112.70	2	0	4572	0.8	48.6	3.9	6.5	8.0	16.5	3.1	10.8	1.8	49.4	3.9	46.7	0.072	0.500	17.349070	-93.586472
Lim. Edos. Term. Tab. Ppia. Chis.	113.70																			
T. Izq. Malpaso	123.79	1	0	4832	1.3	65.7	6.3	6.2	3.6	8.1	2.5	5.5	0.8	67.0	6.3	26.7	0.066	0.514	17.269207	-93.572239
X. C. Tepatán - Raudales Malpaso	134.00	1	0	5764	3.7	55.9	5.5	8.1	3.8	12.4	2.3	7.7	0.6	59.6	5.5	34.9	0.088	0.537	17.191278	-93.554843
T. Der a América Libre	163.40	1	0	6526	5.1	54.6	5.3	9.9	3.5	11.0	2.7	7.4	0.5	59.7	5.3	35.0	0.087	0.542	17.005402	-93.501469
Carrizal	173.60	1	0	6264	3.3	58.1	5.5	9.3	3.2	11.2	2.3	6.6	0.5	61.4	5.5	33.1	0.078	0.502	16.921510	-93.452326
Plaza de Cobro Ocozocoautla	182.50	1	0	5656	3.6	54.2	9.2	5.9	3.4	13.1	2.3	7.5	0.8	57.8	9.2	33.0	0.073	0.539	16.870697	-93.414328
Plaza de Cobro Ocozocoautla	182.50	2	0	5079	0.6	53.6	3.6	6.2	7.1	14.8	2.8	9.8	1.5	54.2	3.6	42.2	0.072	0.500	16.863183	-93.406856
T. C. Tapanatepec - Tuxtla Gutiérrez	197.50	1	0	6304	5.2	59.4	7.9	5.4	2.7	10.4	2.1	6.3	0.6	64.6	7.9	27.5	0.070	0.501	16.774260	-93.320066

10 CARR: Libramiento de Villahermosa (Cuota)

CLAVE:

RUTA: MEX-180D

AÑO: 2025

LUGAR	ESTACION				CLASIFICACION VEHICULAR EN PORCIENTO										COORDENADAS					
	KM	TE	SC	TDPA	M	A	B	C2	C3	T3S2	T3S3	T3S2R4	OTROS	A	B	C	K'	D	LATITUD	LONGITUD
T. C. Coatzacoalcos - Villahermosa	0.00																			

TABASCO

10 CARR: Libramiento de Villahermosa (Cuota)

CLAVE:

RUTA: MEX-180D

AÑO: 2025

LUGAR	ESTACION				CLASIFICACION VEHICULAR EN PORCIENTO													COORDENADAS		
	KM	TE	SC	TDPA	M	A	B	C2	C3	T3S2	T3S3	T3S2R4	OTROS	A	B	C	K'	D	LATITUD	LONGITUD
T. C. Coatzacoalcos - Villahermosa	0.00	3	1	4704	3.2	46.4	5.2	2.7	3.3	23.4	5.7	9.3	0.8	49.6	5.2	45.2	0.074	0.627	17.990350	-93.031588
T. C. Coatzacoalcos - Villahermosa	0.00	3	2	4927	3.0	47.1	5.0	2.4	3.3	23.6	5.5	9.1	1.0	50.1	5.0	44.9	0.081	0.627	17.990426	-93.031755
Plaza de Cobro Nacajuca	16.00	2	1	3161	0.5	31.6	0.6	6.9	8.2	28.6	6.0	15.1	2.5	32.1	0.6	67.3	0.090	0.500	18.076079	-92.930568
Plaza de Cobro Nacajuca	16.00	2	2	3161	0.5	31.6	0.6	6.9	8.2	28.6	6.0	15.1	2.5	32.1	0.6	67.3	0.090	0.500	18.076079	-92.930568
Plaza de Cobro Nacajuca	16.00	3	1	3987	6.7	42.6	7.0	4.0	4.1	19.9	4.5	10.3	0.9	49.3	7.0	43.7	0.065	0.503	18.076896	-92.923013
Plaza de Cobro Nacajuca	16.00	3	2	4108	6.7	42.7	6.8	4.2	4.0	20.2	4.6	9.9	0.9	49.4	6.8	43.8	0.063	0.503	18.077070	-92.923028
T. C. Villahermosa - Cd. Del Carmen	21.70	3	1	4092	4.6	43.4	5.9	4.4	4.0	21.2	5.5	10.3	0.7	48.0	5.9	46.1	0.101	0.653	18.054707	-92.882828
T. C. Villahermosa - Cd. Del Carmen	21.70	3	2	4249	4.8	42.4	6.3	4.7	4.3	21.1	5.6	10.1	0.7	47.2	6.3	46.5	0.077	0.653	18.054670	-92.882644
T. C. Villahermosa - Fco. Escárcega	29.30																			

11 CARR: Benito Juárez - Agua Dulce

CLAVE: 00202

RUTA: TAB-VER

AÑO: 2025

LUGAR	ESTACION				CLASIFICACION VEHICULAR EN PORCIENTO													COORDENADAS		
	KM	TE	SC	TDPA	M	A	B	C2	C3	T3S2	T3S3	T3S2R4	OTROS	A	B	C	K'	D	LATITUD	LONGITUD
Benito Juárez	0.00	3	0	1272	14.3	72.4	2.4	7.8	0.8	1.5	0.4	0.2	0.2	86.7	2.4	10.9	0.089	0.584	18.170745	-93.912851
La Venta	16.80	1	0	1734	18.9	75.0	0.7	4.3	0.4	0.3	0.2	0.1	0.1	93.9	0.7	5.4	0.083	0.542	18.115455	-94.033450
Lim. Edos. Term. Tab. Ppia. Ver.	23.78																			
Agua Dulce	33.00																			

12 CARR: Benito Juárez - Tepetitán

CLAVE: 27204

RUTA: TAB

AÑO: 2025

LUGAR	ESTACION				CLASIFICACION VEHICULAR EN PORCIENTO													COORDENADAS		
	KM	TE	SC	TDPA	M	A	B	C2	C3	T3S2	T3S3	T3S2R4	OTROS	A	B	C	K'	D	LATITUD	LONGITUD
Benito Juárez	0.00																			
X. C. Jalapa - Jonuta	1.50	3	0	5229	18.4	76.0	1.1	2.1	0.8	0.3	0.3	0.5	0.5	94.4	1.1	4.5	0.077	0.593	17.823987	-92.513284
Límbano Blandín	18.50	1	0	907	33.5	62.0	0.4	3.4	0.3	0.3	0.1	0.0	0.0	95.5	0.4	4.1	0.090	0.634	17.755838	-92.417316
Límbano Blandín	18.50	3	0	932	22.7	73.5	0.3	2.6	0.5	0.1	0.3	0.0	0.0	96.2	0.3	3.5	0.089	0.530	17.761369	-92.404445
Tepetitán	20.00	1	0	1506	30.7	64.3	0.9	3.1	0.7	0.3	0.0	0.0	0.0	95.0	0.9	4.1	0.088	0.526	17.814303	-92.376923

13 CARR: Cacaos - La Granja

CLAVE: 27002

RUTA: TAB

AÑO: 2025

LUGAR	ESTACION				CLASIFICACION VEHICULAR EN PORCIENTO													COORDENADAS		
	KM	TE	SC	TDPA	M	A	B	C2	C3	T3S2	T3S3	T3S2R4	OTROS	A	B	C	K'	D	LATITUD	LONGITUD
Cacaos	0.00	3	0	2784	12.1	84.0	0.4	1.1	1.6	0.4	0.2	0.1	0.1	96.1	0.4	3.5	0.092	0.573	17.829081	-92.854381
X. C. Villahermosa - Francisco Escárcega	16.00	3	0	4206	10.0	81.4	1.0	3.8	1.4	1.2	0.7	0.4	0.1	91.4	1.0	7.6	0.092	0.562	17.828155	-92.714379

TABASCO

13 CARR: Cacaos - La Granja

CLAVE: 27002

RUTA: TAB

AÑO: 2025

LUGAR	ESTACION				CLASIFICACION VEHICULAR EN PORCIENTO														COORDENADAS	
	KM	TE	SC	TDPA	M	A	B	C2	C3	T3S2	T3S3	T3S2R4	OTROS	A	B	C	K'	D	LATITUD	LONGITUD
T. C. Jalapa - Jonuta	39.00	1	0	6297	12.2	81.1	0.9	3.9	0.6	0.5	0.6	0.1	0.1	93.3	0.9	5.8	0.075	0.566	17.845997	-92.503094

14 CARR: Cárdenas - Paraíso

CLAVE: 27117

RUTA: TAB

AÑO: 2025

LUGAR	ESTACION				CLASIFICACION VEHICULAR EN PORCIENTO														COORDENADAS	
	KM	TE	SC	TDPA	M	A	B	C2	C3	T3S2	T3S3	T3S2R4	OTROS	A	B	C	K'	D	LATITUD	LONGITUD
T. C. Coatzacoalcos - Villahermosa	0.00	3	0	11982	14.5	78.5	1.1	1.4	1.8	0.9	0.5	0.8	0.5	93.0	1.1	5.9	0.065	0.545	18.001323	-93.385610
T. Izq. El Golpe	22.00	1	0	1704	18.1	64.8	3.2	2.8	2.7	2.9	2.8	2.6	0.1	82.9	3.2	13.9	0.075	0.535	18.111910	-93.308407
T. Izq. El Golpe	22.00	3	0	1893	22.6	64.5	1.8	3.5	2.4	2.4	0.6	1.5	0.7	87.1	1.8	11.1	0.078	0.547	18.116472	-93.303746
Comalcalco	37.00	3	0	4624	28.2	60.2	1.7	2.5	1.6	1.4	1.7	2.0	0.7	88.4	1.7	9.9	0.073	0.504	18.297411	-93.214234
Paraíso	52.00	1	0	9255	21.5	63.1	1.4	4.6	2.0	2.7	1.6	2.5	0.6	84.6	1.4	14.0	0.091	0.879	18.377902	-93.232959

15 CARR: Chichicapa - Ent. La Libertad

CLAVE: 27100

RUTA: TAB

AÑO: 2025

LUGAR	ESTACION				CLASIFICACION VEHICULAR EN PORCIENTO														COORDENADAS	
	KM	TE	SC	TDPA	M	A	B	C2	C3	T3S2	T3S3	T3S2R4	OTROS	A	B	C	K'	D	LATITUD	LONGITUD
Chichicapa	0.00	3	0	5070	23.4	69.4	1.1	2.4	1.2	1.1	0.7	0.7	0.0	92.8	1.1	6.1	0.084	0.527	18.273060	-93.182685
Nicolás Bravo	10.00	3	0	6875	31.2	60.7	1.2	2.0	1.3	1.2	0.7	1.1	0.6	91.9	1.2	6.9	0.094	0.841	18.294672	-93.157555
Ent. La Libertad	18.00	1	0	6676	31.7	60.1	1.1	1.9	1.2	1.2	0.9	1.2	0.7	91.8	1.1	7.1	0.078	0.533	18.317559	-93.170252

16 CARR: Comalcalco - El Golpe

CLAVE: 27102

RUTA: TAB

AÑO: 2025

LUGAR	ESTACION				CLASIFICACION VEHICULAR EN PORCIENTO														COORDENADAS	
	KM	TE	SC	TDPA	M	A	B	C2	C3	T3S2	T3S3	T3S2R4	OTROS	A	B	C	K'	D	LATITUD	LONGITUD
Comalcalco	0.00	3	0	24004	35.6	57.8	0.9	2.0	1.0	0.8	0.5	1.0	0.4	93.4	0.9	5.7	0.071	0.525	18.253618	-93.233896
Libramiento de Comalcalco	2.60	3	0	18021	29.7	62.0	2.0	2.8	1.3	0.7	0.5	0.6	0.4	91.7	2.0	6.3	0.077	0.604	18.249609	-93.242282
T. Izq. Villa Aldama	9.40	1	0	7069	18.7	72.0	1.9	2.7	1.5	0.9	0.8	0.9	0.6	90.7	1.9	7.4	0.077	0.503	18.253806	-93.302275
T. Izq. Villa Aldama	9.40	3	0	8469	21.6	69.6	1.2	2.5	1.3	1.1	0.7	1.3	0.7	91.2	1.2	7.6	0.071	0.554	18.262670	-93.313920
Tecolutilla	15.00	1	0	6528	21.8	69.6	1.1	2.5	1.0	1.0	1.1	1.2	0.7	91.4	1.1	7.5	0.079	0.541	18.271298	-93.314896
Tecolutilla	15.00	3	0	9242	21.3	71.2	1.5	0.4	0.9	1.8	0.7	1.5	0.7	92.5	1.5	6.0	0.080	0.518	18.285740	-93.343231
T. Der. Lazáro Cárdenas	20.00	3	0	3304	42.7	46.2	1.7	2.4	1.9	2.1	1.3	1.6	0.1	88.9	1.7	9.4	0.106	0.504	18.280123	-93.382372
Carlos Green	33.00	3	0	4631	21.2	71.7	1.1	1.5	0.5	1.2	1.1	1.0	0.7	92.9	1.1	6.0	0.089	0.532	18.232483	-93.457870
El Golpe	51.60	1	0	891	56.3	34.3	1.5	1.2	2.1	1.6	0.9	1.4	0.7	90.6	1.5	7.9	0.093	0.578	18.330259	-93.532895

TABASCO

17 CARR: El Bellote - Santa Cruz

CLAVE: 27105

RUTA: TAB

AÑO: 2025

LUGAR	ESTACION				CLASIFICACION VEHICULAR EN PORCIENTO													COORDENADAS		
	KM	TE	SC	TDPA	M	A	B	C2	C3	T3S2	T3S3	T3S2R4	OTROS	A	B	C	K'	D	LATITUD	LONGITUD
Bellote	0.00	3	0	9257	20.4	72.6	0.8	1.6	1.7	0.9	0.7	0.7	0.6	93.0	0.8	6.2	0.077	0.619	18.426221	-93.118537
T. Der. Chichicapa	8.00	3	0	5076	23.4	69.8	1.2	2.2	1.3	0.8	0.8	0.5	0.0	93.2	1.2	5.6	0.106	0.770	18.423424	-93.070950
Ignacio Allende	35.00	1	0	4731	13.5	82.4	0.5	1.3	0.6	0.6	0.2	0.8	0.1	95.9	0.5	3.6	0.082	0.513	18.385328	-92.861659
Ignacio Allende	35.00	3	0	4650	13.1	84.0	0.2	0.9	0.8	0.5	0.2	0.2	0.1	97.1	0.2	2.7	0.077	0.500	18.382620	-92.828883
Santa Cruz	40.00	1	0	5988	6.2	90.8	0.3	0.9	0.7	0.4	0.3	0.3	0.1	97.0	0.3	2.7	0.078	0.577	18.386059	-92.807773

18 CARR: Ent. Emiliano Zapata - La Libertad

CLAVE: 00062

RUTA: CHIS-TAB

AÑO: 2025

LUGAR	ESTACION				CLASIFICACION VEHICULAR EN PORCIENTO													COORDENADAS		
	KM	TE	SC	TDPA	M	A	B	C2	C3	T3S2	T3S3	T3S2R4	OTROS	A	B	C	K'	D	LATITUD	LONGITUD
T. C. El Suspiro - Tenosique	0.00	3	0	2219	16.3	80.6	0.6	1.3	0.5	0.7	0.0	0.0	0.0	96.9	0.6	2.5	0.084	0.532	17.720590	-91.744408
Lim. Edos. Term. Tab. Ppia. Chis.	8.00																			
La Libertad	10.00	1	0	1772	7.6	85.8	0.4	2.4	0.6	3.0	0.1	0.0	0.1	93.4	0.4	6.2	0.087	0.523	17.690579	-91.722253

19 CARR: Estación Macuspana - Vernet

CLAVE: 27091

RUTA: TAB-041

AÑO: 2025

LUGAR	ESTACION				CLASIFICACION VEHICULAR EN PORCIENTO													COORDENADAS		
	KM	TE	SC	TDPA	M	A	B	C2	C3	T3S2	T3S3	T3S2R4	OTROS	A	B	C	K'	D	LATITUD	LONGITUD
Estación Macuspana	0.00																			
X. C. Villahermosa - Francisco Escárcega	11.00	1	0	2714	22.1	61.5	0.6	9.1	3.2	1.4	1.4	0.5	0.2	83.6	0.6	15.8	0.118	0.605	17.713381	-92.569355
X. C. Villahermosa - Francisco Escárcega	11.00	3	0	2751	32.8	54.7	0.4	4.4	4.0	1.9	1.0	0.6	0.2	87.5	0.4	12.1	0.106	0.591	17.704864	-92.569782
Belem	20.50	1	1	6844	19.3	76.2	0.6	1.9	0.3	0.9	0.5	0.1	0.2	95.5	0.6	3.9	0.076	0.547	17.775378	-92.607299
Belem	20.50	1	2	6380	19.7	76.5	0.5	1.8	0.3	0.4	0.6	0.1	0.1	96.2	0.5	3.3	0.073	0.547	17.775302	-92.607337
Belem	20.50	3	0	2742	23.5	70.5	0.7	3.5	0.4	0.7	0.4	0.2	0.1	94.0	0.7	5.3	0.093	0.557	17.802473	-92.606193
X. C. Cacaos - La Granja	25.50	3	0	2014	29.0	66.5	0.2	3.2	0.2	0.3	0.5	0.1	0.0	95.5	0.2	4.3	0.093	0.564	17.841293	-92.607380
Vernet	32.50	1	0	600	29.8	68.4	0.2	0.9	0.4	0.2	0.1	0.0	0.0	98.2	0.2	1.6	0.103	0.645	17.916678	-92.598307

20 CARR: Frontera - T. C. (Jalapa - Jonuta)

CLAVE: 27081

RUTA: TAB

AÑO: 2025

LUGAR	ESTACION				CLASIFICACION VEHICULAR EN PORCIENTO													COORDENADAS		
	KM	TE	SC	TDPA	M	A	B	C2	C3	T3S2	T3S3	T3S2R4	OTROS	A	B	C	K'	D	LATITUD	LONGITUD
Frontera	0.00																			
X. C. Villahermosa - Cd. del Carmen	1.00	3	0	2366	14.1	79.5	0.7	3.1	1.9	0.3	0.1	0.2	0.1	93.6	0.7	5.7	0.089	0.536	18.506397	-92.650479
T. C. Jalapa - Jonuta	123.00	1	0	527	12.6	78.3	1.4	5.5	0.8	0.7	0.6	0.1	0.0	90.9	1.4	7.7	0.112	0.559	18.101929	-92.169606

TABASCO

21 CARR: Gregorio Méndez Magaña - Reforma de Ocampo

CLAVE: 00103

RUTA: CHIS

AÑO: 2025

LUGAR	ESTACION				CLASIFICACION VEHICULAR EN PORCIENTO													COORDENADAS		
	KM	TE	SC	TDPA	M	A	B	C2	C3	T3S2	T3S3	T3S2R4	OTROS	A	B	C	K'	D	LATITUD	LONGITUD
Gregorio Méndez Magaña	0.00	3	0	1073	27.5	60.7	1.4	4.7	2.8	0.9	1.5	0.5	0.0	88.2	1.4	10.4	0.081	0.529	17.446436	-91.595981
Lim. Edos. Term. Tab. Ppia. Chis.	3.00																			
T. C. Benemérito de Las Américas - Palenque	21.00	1	0	3103	8.9	83.1	1.4	4.8	1.0	0.3	0.2	0.1	0.2	92.0	1.4	6.6	0.081	0.508	17.322854	-91.693005
Reforma de Ocampo	22.00																			

22 CARR: Jalapa - Jonuta

CLAVE: 27107

RUTA: TAB

AÑO: 2025

LUGAR	ESTACION				CLASIFICACION VEHICULAR EN PORCIENTO													COORDENADAS		
	KM	TE	SC	TDPA	M	A	B	C2	C3	T3S2	T3S3	T3S2R4	OTROS	A	B	C	K'	D	LATITUD	LONGITUD
Jalapa	0.00	3	0	3411	36.1	58.2	0.6	1.5	2.2	0.7	0.2	0.4	0.1	94.3	0.6	5.1	0.088	0.623	17.721953	-92.805698
X. C. Villahermosa - Francisco Escárcega	15.00	1	0	2520	26.0	67.4	0.5	2.8	1.9	0.6	0.2	0.5	0.1	93.4	0.5	6.1	0.088	0.534	17.782864	-92.690929
X. C. Villahermosa - Francisco Escárcega	15.00	3	0	1504	28.3	67.1	1.0	1.9	0.6	0.3	0.5	0.2	0.1	95.4	1.0	3.6	0.088	0.598	17.782133	-92.679750
Belem	24.00	1	0	1314	38.5	53.8	0.5	5.3	0.3	0.8	0.2	0.3	0.3	92.3	0.5	7.2	0.086	0.584	17.781662	-92.619506
T. Izq. Cacaos	39.00	1	0	5087	20.7	75.1	0.4	2.1	0.9	0.4	0.1	0.2	0.1	95.8	0.4	3.8	0.079	0.641	17.844380	-92.501627
Cd. PEMEX	43.00	1	1	7316	13.3	81.9	0.6	3.0	0.5	0.3	0.2	0.2	0.0	95.2	0.6	4.2	0.109	0.626	17.879258	-92.484613
Cd. PEMEX	43.00	1	2	7825	13.1	81.5	0.3	3.8	0.3	0.7	0.2	0.1	0.0	94.6	0.3	5.1	0.075	0.626	17.879303	-92.484705
Cd. PEMEX	43.00	3	0	3011	21.1	73.1	0.9	3.5	0.7	0.2	0.3	0.2	0.0	94.2	0.9	4.9	0.080	0.606	17.896015	-92.482661
Jonuta	97.50	1	0	2677	9.2	82.8	1.3	5.0	1.0	0.3	0.2	0.2	0.0	92.0	1.3	6.7	0.086	0.580	18.108721	-92.124413

23 CARR: Libramiento Sur de Comalcalco

CLAVE:

RUTA: TAB

AÑO: 2025

LUGAR	ESTACION				CLASIFICACION VEHICULAR EN PORCIENTO													COORDENADAS		
	KM	TE	SC	TDPA	M	A	B	C2	C3	T3S2	T3S3	T3S2R4	OTROS	A	B	C	K'	D	LATITUD	LONGITUD
T. C. Malpaso - El Bellote	0.00	3	0	8419	19.3	69.6	1.5	4.6	1.6	1.1	0.8	0.8	0.7	88.9	1.5	9.6	0.111	0.528	18.229212	-93.213752
T. C. Comalcalco - El Golpe	4.40																			

24 CARR: Nicolás Bravo - T. C. (El Bellote - Santa Cruz)

CLAVE: 27010

RUTA: TAB

AÑO: 2025

LUGAR	ESTACION				CLASIFICACION VEHICULAR EN PORCIENTO													COORDENADAS		
	KM	TE	SC	TDPA	M	A	B	C2	C3	T3S2	T3S3	T3S2R4	OTROS	A	B	C	K'	D	LATITUD	LONGITUD
Nicolás Bravo	0.00	3	0	3442	30.5	63.7	1.3	2.0	1.6	0.3	0.3	0.3	0.0	94.2	1.3	4.5	0.086	0.519	18.297433	-93.132199
T. C. Bellote - Santa Cruz	22.00	1	0	1393	19.1	74.3	0.5	4.0	0.4	0.5	0.5	0.5	0.2	93.4	0.5	6.1	0.119	0.807	18.424242	-93.076207

TABASCO

25 CARR: Pailebot - Cuauhtemotzin

CLAVE: 27112

RUTA: TAB

AÑO: 2025

LUGAR	ESTACION				CLASIFICACION VEHICULAR EN PORCIENTO										COORDENADAS					
	KM	TE	SC	TDPA	M	A	B	C2	C3	T3S2	T3S3	T3S2R4	OTROS	A	B	C	K'	D	LATITUD	LONGITUD
Pailebot	0.00	3	0	976	19.0	80.0	0.2	0.2	0.4	0.1	0.1	0.0	0.0	99.0	0.2	0.8	0.129	0.508	18.257467	-93.953140
Cuauhtemotzin	23.00	1	0	911	30.1	69.0	0.1	0.4	0.4	0.0	0.0	0.0	0.0	99.1	0.1	0.8	0.095	0.621	18.205373	-94.122521

26 CARR: Paraíso - El Limón

CLAVE: 27108

RUTA: TAB

AÑO: 2025

LUGAR	ESTACION				CLASIFICACION VEHICULAR EN PORCIENTO										COORDENADAS					
	KM	TE	SC	TDPA	M	A	B	C2	C3	T3S2	T3S3	T3S2R4	OTROS	A	B	C	K'	D	LATITUD	LONGITUD
Paraíso	0.00	3	0	14671	9.5	76.1	1.2	3.3	3.5	3.1	1.3	1.3	0.7	85.6	1.2	13.2	0.094	0.669	18.399849	-93.217908
Limón	6.00	1	0	17221	13.5	70.9	1.5	3.3	2.7	2.8	1.3	3.1	0.9	84.4	1.5	14.1	0.085	0.562	18.407037	-93.215161

27 CARR: Paso de Cunduacán - Estación Juárez

CLAVE: 00588

RUTA: TAB-CHIS

AÑO: 2025

LUGAR	ESTACION				CLASIFICACION VEHICULAR EN PORCIENTO										COORDENADAS					
	KM	TE	SC	TDPA	M	A	B	C2	C3	T3S2	T3S3	T3S2R4	OTROS	A	B	C	K'	D	LATITUD	LONGITUD
Paso de Cunduacán	0.00	3	0	10023	6.6	83.8	0.4	5.7	0.9	1.2	0.6	0.5	0.3	90.4	0.4	9.2	0.115	0.606	17.958666	-93.138492
Lim. Edos. Term. Tab. Ppia. Chis.	9.00																			
Santa Teresa 2º Secc.	18.00	3	0	2315	11.0	77.9	0.4	7.0	1.4	1.9	0.3	0.0	0.1	88.9	0.4	10.7	0.089	0.553	17.766718	-93.169205
Estación Juárez	57.80	1	0	2879	14.3	77.2	0.3	5.1	1.0	1.6	0.2	0.1	0.2	91.5	0.3	8.2	0.083	0.575	17.621939	-93.166892

28 CARR: Playas del Rosario - Teapa

CLAVE: 27203

RUTA: TAB-001

AÑO: 2025

LUGAR	ESTACION				CLASIFICACION VEHICULAR EN PORCIENTO										COORDENADAS					
	KM	TE	SC	TDPA	M	A	B	C2	C3	T3S2	T3S3	T3S2R4	OTROS	A	B	C	K'	D	LATITUD	LONGITUD
T. C. Villahermosa - Escopetazo	0.00	3	1	4951	6.2	88.1	0.4	1.3	1.1	0.7	1.0	0.8	0.4	94.3	0.4	5.3	0.079	0.533	17.839856	-92.924068
T. C. Villahermosa - Escopetazo	0.00	3	2	4822	6.3	88.2	0.6	1.1	1.0	0.9	0.8	0.6	0.5	94.5	0.6	4.9	0.095	0.533	17.839897	-92.924045
Revolución Mexicana	1.20	3	0	8247	10.1	84.8	0.8	1.1	0.9	0.4	0.8	0.6	0.5	94.9	0.8	4.3	0.078	0.538	17.833463	-92.898985
Cacaos	7.00	1	0	6618	12.0	81.6	1.0	1.5	0.9	0.8	0.5	0.7	1.0	93.6	1.0	5.4	0.089	0.644	17.829713	-92.866237
Cacaos	7.00	3	0	4442	10.1	82.4	1.2	2.1	0.9	1.1	0.7	0.9	0.6	92.5	1.2	6.3	0.076	0.513	17.824971	-92.852750
Jalapa	23.00	1	0	5257	11.4	83.7	0.4	1.7	0.8	1.1	0.5	0.2	0.2	95.1	0.4	4.5	0.084	0.620	17.731477	-92.816630
Jalapa	23.00	3	0	4654	14.9	79.4	0.5	2.6	1.2	0.8	0.3	0.2	0.1	94.3	0.5	5.2	0.091	0.572	17.708209	-92.808207
T. Izq. Tacotalpa	39.00	1	0	5629	14.9	79.2	0.9	2.2	1.1	0.9	0.5	0.2	0.1	94.1	0.9	5.0	0.091	0.603	17.595426	-92.833137
T. Izq. Tacotalpa	39.00	3	1	4296	16.0	79.8	0.5	1.5	0.8	0.6	0.4	0.3	0.1	95.8	0.5	3.7	0.104	0.515	17.591970	-92.835228
T. Izq. Tacotalpa	39.00	3	2	4232	15.7	80.6	0.4	1.2	1.0	0.5	0.3	0.2	0.1	96.3	0.4	3.3	0.104	0.515	17.591942	-92.835117
Teapa	54.00	1	0	3155	11.1	77.7	1.6	2.1	1.7	2.2	1.7	1.4	0.5	88.8	1.6	9.6	0.119	0.536	17.550850	-92.944323

TABASCO

29 CARR: Ramal a Balancán

CLAVE: 27078

RUTA: TAB

AÑO: 2025

LUGAR	ESTACION				CLASIFICACION VEHICULAR EN PORCIENTO										COORDENADAS					
	KM	TE	SC	TDPA	M	A	B	C2	C3	T3S2	T3S3	T3S2R4	OTROS	A	B	C	K'	D	LATITUD	LONGITUD
T. C. El Suspiro - Tenosique	0.00	3	0	1766	2.7	91.8	1.4	1.6	1.5	0.7	0.3	0.0	0.0	94.5	1.4	4.1	0.083	0.558	17.632934	-91.600364
Balancán	24.00	1	0	5084	14.3	76.4	1.3	3.6	2.6	0.8	0.8	0.2	0.0	90.7	1.3	8.0	0.082	0.516	17.835734	-91.531173

30 CARR: Ramal a La Venta

CLAVE: 27078

RUTA: TAB

AÑO: 2025

LUGAR	ESTACION				CLASIFICACION VEHICULAR EN PORCIENTO										COORDENADAS					
	KM	TE	SC	TDPA	M	A	B	C2	C3	T3S2	T3S3	T3S2R4	OTROS	A	B	C	K'	D	LATITUD	LONGITUD
T. C. Coatzacoalcos - Villahermosa	0.00	3	0	4974	12.8	79.3	1.9	3.4	1.2	0.7	0.3	0.0	0.4	92.1	1.9	6.0	0.082	0.529	18.075153	-94.042008
La Venta	4.25																			

31 CARR: Ramal a Lázaro Cárdenas

CLAVE: 27208

RUTA: TAB

AÑO: 2025

LUGAR	ESTACION				CLASIFICACION VEHICULAR EN PORCIENTO										COORDENADAS					
	KM	TE	SC	TDPA	M	A	B	C2	C3	T3S2	T3S3	T3S2R4	OTROS	A	B	C	K'	D	LATITUD	LONGITUD
T. C. Comalcalco - El Golpe	0.00	3	0	2967	28.8	62.7	1.4	2.7	1.4	1.4	0.7	0.4	0.5	91.5	1.4	7.1	0.110	0.593	18.286867	-93.384817
Lázaro Cárdenas	14.00	1	0	2056	38.4	53.6	2.2	1.9	0.9	1.9	0.6	0.4	0.1	92.0	2.2	5.8	0.078	0.519	18.319310	-93.435470

32 CARR: Ramal a Libertad

CLAVE: 27205

RUTA: TAB

AÑO: 2025

LUGAR	ESTACION				CLASIFICACION VEHICULAR EN PORCIENTO										COORDENADAS					
	KM	TE	SC	TDPA	M	A	B	C2	C3	T3S2	T3S3	T3S2R4	OTROS	A	B	C	K'	D	LATITUD	LONGITUD
T. C. Cárdenas - Paraíso	0.00	3	0	3814	16.0	78.3	0.9	1.3	1.3	1.4	0.4	0.3	0.1	94.3	0.9	4.8	0.078	0.609	18.117226	-93.309459
Libertad	10.00	1	0	3274	35.6	56.1	1.5	1.8	1.8	1.6	1.3	0.2	0.1	91.7	1.5	6.8	0.079	0.519	18.176178	-93.361634

33 CARR: Ramal a Salto del Agua

CLAVE: 00069

RUTA: TAB-CHIS

AÑO: 2025

LUGAR	ESTACION				CLASIFICACION VEHICULAR EN PORCIENTO										COORDENADAS					
	KM	TE	SC	TDPA	M	A	B	C2	C3	T3S2	T3S3	T3S2R4	OTROS	A	B	C	K'	D	LATITUD	LONGITUD
T. C. Villahermosa - Francisco Escárcega	0.00	3	0	1854	7.1	70.0	2.4	2.2	4.4	6.0	3.1	4.5	0.3	77.1	2.4	20.5	0.093	0.595	17.664987	-92.435975
Lim. Edos. Term. Tab. Ppia. Chis.	12.00																			
Salto del Agua	17.00	1	0	2346	7.4	85.3	0.7	3.9	0.6	1.5	0.5	0.0	0.1	92.7	0.7	6.6	0.102	0.563	17.559526	-92.354063

TABASCO

34 CARR: Ramal a San Antonio

CLAVE: 27003

RUTA: TAB

AÑO: 2025

LUGAR	ESTACION				CLASIFICACION VEHICULAR EN PORCIENTO													COORDENADAS		
	KM	TE	SC	TDPA	M	A	B	C2	C3	T3S2	T3S3	T3S2R4	OTROS	A	B	C	K'	D	LATITUD	LONGITUD
T. C. Villahermosa - Francisco Escárcega	0.00	3	0	1093	15.8	70.7	1.5	3.9	3.7	1.9	0.9	1.3	0.3	86.5	1.5	12.0	0.076	0.518	17.928326	-91.742722
T. Der. Balancán	24.00	1	0	2037	22.7	70.9	0.7	2.2	1.5	1.3	0.5	0.1	0.1	93.6	0.7	5.7	0.089	0.514	17.871985	-91.532943
T. Der. Balancán	24.00	3	0	2706	22.7	71.5	0.7	2.2	1.4	0.8	0.4	0.2	0.1	94.2	0.7	5.1	0.095	0.591	17.872009	-91.522519
El Triunfo	72.00																			

35 CARR: Ramal a Sánchez Magallanes

CLAVE: 27016

RUTA: TAB

AÑO: 2025

LUGAR	ESTACION				CLASIFICACION VEHICULAR EN PORCIENTO													COORDENADAS		
	KM	TE	SC	TDPA	M	A	B	C2	C3	T3S2	T3S3	T3S2R4	OTROS	A	B	C	K'	D	LATITUD	LONGITUD
T. C. Coatzacoalcos - Villahermosa	0.00	3	0	1608	33.0	58.7	1.1	2.9	1.3	1.5	0.9	0.6	0.0	91.7	1.1	7.2	0.088	0.546	18.075585	-93.878212
Campo Magallanes	13.00	1	0	1781	22.9	70.4	1.1	2.9	1.0	0.8	0.6	0.3	0.0	93.3	1.1	5.6	0.088	0.650	18.163473	-93.905887
Campo Magallanes	13.00	3	0	4380	32.5	53.5	1.5	6.0	1.3	3.8	1.1	0.2	0.1	86.0	1.5	12.5	0.078	0.506	18.173786	-93.905414
Sánchez Magallanes	33.00	1	0	1617	25.1	66.3	1.4	5.6	1.1	0.4	0.1	0.0	0.0	91.4	1.4	7.2	0.103	0.524	18.274974	-93.894398

36 CARR: Ramal a Tamulte de Las Sabanas

CLAVE: 27080

RUTA: TAB

AÑO: 2025

LUGAR	ESTACION				CLASIFICACION VEHICULAR EN PORCIENTO													COORDENADAS		
	KM	TE	SC	TDPA	M	A	B	C2	C3	T3S2	T3S3	T3S2R4	OTROS	A	B	C	K'	D	LATITUD	LONGITUD
T. C. Villahermosa - Cd. del Carmen	0.00	3	0	3585	7.6	88.1	1.7	1.7	0.4	0.3	0.1	0.1	0.0	95.7	1.7	2.6	0.093	0.622	18.199980	-92.824004
Tamulte de Las Sabanas	7.00																			

37 CARR: Ramal a Tapijulapa

CLAVE: 27200

RUTA: TAB

AÑO: 2025

LUGAR	ESTACION				CLASIFICACION VEHICULAR EN PORCIENTO													COORDENADAS		
	KM	TE	SC	TDPA	M	A	B	C2	C3	T3S2	T3S3	T3S2R4	OTROS	A	B	C	K'	D	LATITUD	LONGITUD
T. C. Playas del Rosario - Teapa	0.00	3	0	4711	28.2	66.9	0.6	1.9	1.1	0.3	0.6	0.1	0.3	95.1	0.6	4.3	0.085	0.506	17.571736	-92.832300
Tapijulapa	20.00	1	0	2085	29.2	64.3	0.4	1.6	1.7	0.8	0.5	1.2	0.3	93.5	0.4	6.1	0.101	0.611	17.458197	-92.786030

38 CARR: Reforma - Dos Bocas

CLAVE: 27200

RUTA: TAB

AÑO: 2025

LUGAR	ESTACION				CLASIFICACION VEHICULAR EN PORCIENTO													COORDENADAS		
	KM	TE	SC	TDPA	M	A	B	C2	C3	T3S2	T3S3	T3S2R4	OTROS	A	B	C	K'	D	LATITUD	LONGITUD
Reforma	0.00	3	1	14932	5.2	79.7	1.8	4.6	3.2	2.4	1.1	1.3	0.7	84.9	1.8	13.3	0.087	0.567	17.979070	-93.127531
Reforma	0.00	3	2	16405	5.4	78.6	2.2	4.8	3.4	2.2	1.3	1.4	0.7	84.0	2.2	13.8	0.105	0.567	17.979130	-93.127690
Paraiso	49.70																			

TABASCO

38 CARR: Reforma - Dos Bocas

CLAVE: 27200

RUTA: TAB

AÑO: 2025

LUGAR	ESTACION				CLASIFICACION VEHICULAR EN PORCIENTO														COORDENADAS	
	KM	TE	SC	TDPA	M	A	B	C2	C3	T3S2	T3S3	T3S2R4	OTROS	A	B	C	K'	D	LATITUD	LONGITUD
Dos Bocas	53.00	1	1	3459	20.3	62.5	1.8	4.2	2.1	3.4	1.9	3.1	0.7	82.8	1.8	15.4	0.144	0.722	18.424247	-93.207479
Dos Bocas	53.00	1	2	3762	20.5	61.7	1.5	4.3	2.2	3.3	1.7	3.8	1.0	82.2	1.5	16.3	0.104	0.722	18.424252	-93.207583

39 CARR: Reyes Hernández - Villa Aldama

CLAVE: 27119

RUTA: TAB

AÑO: 2025

LUGAR	ESTACION				CLASIFICACION VEHICULAR EN PORCIENTO														COORDENADAS	
	KM	TE	SC	TDPA	M	A	B	C2	C3	T3S2	T3S3	T3S2R4	OTROS	A	B	C	K'	D	LATITUD	LONGITUD
Reyes Hernández	0.00	3	0	7373	27.2	66.0	0.7	2.6	1.4	0.9	0.3	0.7	0.2	93.2	0.7	6.1	0.079	0.670	18.241263	-93.278198
T. C. (Cárdenas - Paraíso) - Carlos Green	9.00	1	0	6380	25.2	66.7	0.9	2.3	0.9	1.0	1.2	0.8	0.8	91.9	0.9	7.2	0.067	0.513	18.239473	-93.342925

40 CARR: Samaria - Amatitán

CLAVE: 27114

RUTA: TAB

AÑO: 2025

LUGAR	ESTACION				CLASIFICACION VEHICULAR EN PORCIENTO														COORDENADAS	
	KM	TE	SC	TDPA	M	A	B	C2	C3	T3S2	T3S3	T3S2R4	OTROS	A	B	C	K'	D	LATITUD	LONGITUD
T. C. Coatzacoalcos - Villahermosa	0.00	3	0	2557	8.5	85.1	1.6	3.5	0.7	0.4	0.1	0.1	0.0	93.6	1.6	4.8	0.095	0.558	18.001781	-93.274216
Cunduacán	17.00	1	0	10936	24.8	72.9	0.2	1.1	0.4	0.2	0.1	0.2	0.1	97.7	0.2	2.1	0.076	0.622	18.054625	-93.190302
Cunduacán	17.00	3	0	4564	31.1	64.6	0.6	1.3	0.2	1.1	0.7	0.3	0.1	95.7	0.6	3.7	0.086	0.596	18.080916	-93.169660
Amatitán	31.40	1	0	7873	22.7	70.7	1.0	1.5	1.2	1.0	0.7	0.9	0.3	93.4	1.0	5.6	0.071	0.540	18.174688	-93.085807

41 CARR: T. C. (Cárdenas - Paraíso) - Carlos Green

CLAVE: 27111

RUTA: TAB

AÑO: 2025

LUGAR	ESTACION				CLASIFICACION VEHICULAR EN PORCIENTO														COORDENADAS	
	KM	TE	SC	TDPA	M	A	B	C2	C3	T3S2	T3S3	T3S2R4	OTROS	A	B	C	K'	D	LATITUD	LONGITUD
T. C. Cárdenas - Paraíso	0.00	3	0	808	18.4	70.1	2.3	2.7	1.7	1.5	1.4	1.2	0.7	88.5	2.3	9.2	0.105	0.506	18.110189	-93.322958
T. Der. Reyes Hernández	21.50	3	0	1524	29.4	63.6	1.1	3.4	1.0	0.6	0.3	0.5	0.1	93.0	1.1	5.9	0.087	0.614	18.180718	-93.395617
Carlos Green	30.70	1	0	2126	28.8	64.1	1.7	2.0	2.2	0.6	0.1	0.5	0.0	92.9	1.7	5.4	0.098	0.708	18.233277	-93.446235

42 CARR: Tierra Nueva - Francisco Rueda

CLAVE: 27110

RUTA: TAB

AÑO: 2025

LUGAR	ESTACION				CLASIFICACION VEHICULAR EN PORCIENTO														COORDENADAS	
	KM	TE	SC	TDPA	M	A	B	C2	C3	T3S2	T3S3	T3S2R4	OTROS	A	B	C	K'	D	LATITUD	LONGITUD
Tierra Nueva	0.00	3	0	2612	34.9	58.1	1.1	2.9	0.7	1.6	0.3	0.4	0.0	93.0	1.1	5.9	0.089	0.591	17.799017	-93.451614
Ocuapan	14.00	3	0	1224	30.2	61.2	2.0	3.2	0.3	2.1	0.4	0.6	0.0	91.4	2.0	6.6	0.083	0.529	17.832549	-93.513871
T. Izq. Encomendadero	31.00	1	0	1218	33.5	58.6	0.3	2.5	1.9	2.1	0.3	0.8	0.0	92.1	0.3	7.6	0.116	0.738	17.794600	-93.627139
T. Izq. Encomendadero	31.00	3	0	1164	36.3	56.6	0.5	3.0	0.7	2.0	0.4	0.5	0.0	92.9	0.5	6.6	0.119	0.691	17.783728	-93.634002

TABASCO

42 CARR: Tierra Nueva - Francisco Rueda

CLAVE: 27110

RUTA: TAB

AÑO: 2025

LUGAR	ESTACION				CLASIFICACION VEHICULAR EN PORCIENTO														COORDENADAS	
	KM	TE	SC	TDPA	M	A	B	C2	C3	T3S2	T3S3	T3S2R4	OTROS	A	B	C	K'	D	LATITUD	LONGITUD
Francisco Rueda	71.00	1	0	716	39.6	54.6	0.8	2.4	1.7	0.4	0.2	0.3	0.0	94.2	0.8	5.0	0.099	0.521	17.835765	-93.925338

43 CARR: Tulipán - Cunduacán

CLAVE: 27115

RUTA: TAB

AÑO: 2025

LUGAR	ESTACION				CLASIFICACION VEHICULAR EN PORCIENTO														COORDENADAS	
	KM	TE	SC	TDPA	M	A	B	C2	C3	T3S2	T3S3	T3S2R4	OTROS	A	B	C	K'	D	LATITUD	LONGITUD
T. C. Malpaso - El Bellote	0.00	3	0	6621	27.0	68.6	0.7	1.2	0.8	1.0	0.1	0.5	0.1	95.6	0.7	3.7	0.087	0.538	18.112918	-93.291969
T. Der. Mote	14.00	1	0	4099	17.6	74.9	1.5	1.8	1.2	1.4	0.9	0.6	0.1	92.5	1.5	6.0	0.091	0.648	18.063024	-93.213833
Cunduacán	15.00	1	0	6113	26.0	70.1	0.5	1.7	0.6	0.3	0.2	0.5	0.1	96.1	0.5	3.4	0.078	0.592	18.056802	-93.199843

44 CARR: Villahermosa - Comalcalco

CLAVE: 27021

RUTA: TAB

AÑO: 2025

LUGAR	ESTACION				CLASIFICACION VEHICULAR EN PORCIENTO														COORDENADAS	
	KM	TE	SC	TDPA	M	A	B	C2	C3	T3S2	T3S3	T3S2R4	OTROS	A	B	C	K'	D	LATITUD	LONGITUD
T. C. Villahermosa - Cd. del Carmen	0.00	3	1	30313	6.5	89.7	0.5	1.7	0.5	0.4	0.2	0.3	0.2	96.2	0.5	3.3	0.083	0.726	18.035080	-92.930626
T. C. Villahermosa - Cd. del Carmen	0.00	3	2	30873	6.6	89.4	0.6	1.8	0.4	0.3	0.2	0.4	0.3	96.0	0.6	3.4	0.107	0.726	18.035069	-92.930729
Saloya	13.00	1	0	21630	10.6	85.4	0.5	0.9	0.7	0.5	0.3	0.6	0.5	96.0	0.5	3.5	0.088	0.714	18.089171	-92.939338
Saloya	13.00	3	0	17603	11.2	83.1	0.6	1.3	1.1	1.2	0.6	0.5	0.4	94.3	0.6	5.1	0.093	0.730	18.101663	-92.951011
Nacajuca	21.00	1	0	16034	16.5	78.2	0.7	1.5	1.0	0.7	0.5	0.5	0.4	94.7	0.7	4.6	0.074	0.602	18.152837	-93.011164
Nacajuca	21.00	3	1	9427	21.5	74.0	0.7	1.1	0.8	0.5	0.5	0.4	0.5	95.5	0.7	3.8	0.073	0.539	18.178074	-93.028185
Nacajuca	21.00	3	2	9251	21.3	74.0	0.7	1.3	0.8	0.6	0.4	0.5	0.4	95.3	0.7	4.0	0.066	0.539	18.177996	-93.028197
Jalpa de Méndez	27.00	3	0	9117	19.4	76.1	0.5	1.1	0.8	0.6	0.5	0.5	0.5	95.5	0.5	4.0	0.078	0.568	18.180794	-93.087323
Cupilco	40.00	1	0	8275	27.3	65.4	0.9	1.9	1.3	1.1	0.7	0.9	0.5	92.7	0.9	6.4	0.075	0.637	18.233993	-93.121152
Cupilco	40.00	3	0	7855	30.5	62.2	1.1	1.6	1.1	1.4	0.5	1.0	0.6	92.7	1.1	6.2	0.082	0.672	18.245572	-93.129709
Chichicapa	46.50	1	0	7522	21.4	70.1	1.1	2.8	1.3	1.1	0.8	0.9	0.5	91.5	1.1	7.4	0.074	0.659	18.261396	-93.168637
T. C. Malpaso - El Bellote	50.70	1	0	16147	10.1	79.6	1.2	4.0	2.0	1.0	0.5	1.1	0.5	89.7	1.2	9.1	0.088	0.526	18.247894	-93.202761

45 CARR: Villahermosa - Luis Gil Pérez

CLAVE: 27206

RUTA: TAB

AÑO: 2025

LUGAR	ESTACION				CLASIFICACION VEHICULAR EN PORCIENTO														COORDENADAS	
	KM	TE	SC	TDPA	M	A	B	C2	C3	T3S2	T3S3	T3S2R4	OTROS	A	B	C	K'	D	LATITUD	LONGITUD
Villahermosa	0.00	3	0	15557	6.3	90.0	0.3	1.7	0.6	0.5	0.3	0.2	0.1	96.3	0.3	3.4	0.073	0.599	17.943246	-92.978463
Luis Gil Pérez	22.00	1	0	4351	30.3	59.9	1.3	2.5	1.4	2.1	1.1	1.3	0.1	90.2	1.3	8.5	0.101	0.544	17.884157	-93.071759

TABASCO

46 CARR: Villahermosa - T. C. (P. de Cunduacán - Estación Juárez)

CLAVE: 27106

RUTA: TAB

AÑO: 2025

LUGAR	ESTACION				CLASIFICACION VEHICULAR EN PORCIENTO													COORDENADAS		
	KM	TE	SC	TDPA	M	A	B	C2	C3	T3S2	T3S3	T3S2R4	OTROS	A	B	C	K'	D	LATITUD	LONGITUD
Villahermosa	0.00	3	0	17528	12.1	82.8	0.3	3.1	0.3	0.3	0.4	0.4	0.3	94.9	0.3	4.8	0.073	0.566	17.958767	-92.982128
San Joaquín	4.00	3	0	7686	12.5	84.8	0.2	1.1	0.8	0.3	0.1	0.1	0.1	97.3	0.2	2.5	0.088	0.565	17.929721	-92.984276
T. Izq. Luis Gil Pérez	19.00	3	0	4886	21.8	73.3	0.4	1.3	1.7	0.8	0.3	0.4	0.0	95.1	0.4	4.5	0.086	0.672	17.896969	-93.067057
T. C. Paso de Cunduacán - Estación Juárez	25.20	1	0	4714	21.6	72.7	0.6	1.6	1.3	1.0	0.3	0.7	0.2	94.3	0.6	5.1	0.106	0.691	17.907963	-93.122423

47 CARR: Zapatero - T. C. (Jalapa - Jonuta)

CLAVE: 00061

RUTA: CHIS-TAB

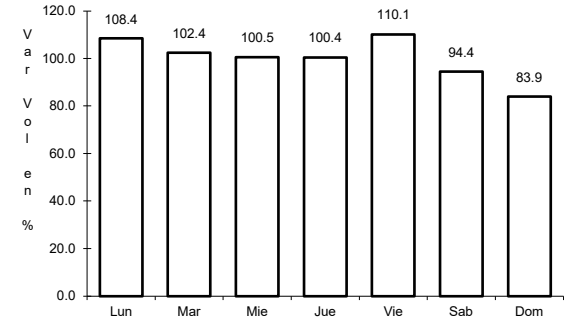
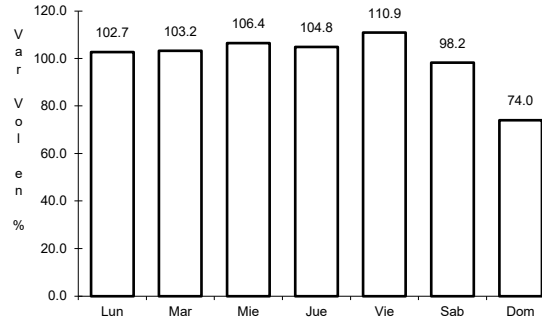
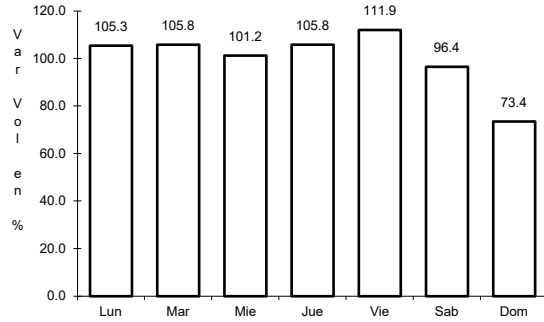
AÑO: 2025

LUGAR	ESTACION				CLASIFICACION VEHICULAR EN PORCIENTO													COORDENADAS		
	KM	TE	SC	TDPA	M	A	B	C2	C3	T3S2	T3S3	T3S2R4	OTROS	A	B	C	K'	D	LATITUD	LONGITUD
T. C. Villahermosa - Francisco Escárcega	0.00	3	0	1886	18.4	73.5	0.4	4.2	1.4	1.4	0.4	0.2	0.1	91.9	0.4	7.7	0.089	0.542	17.699060	-92.131865
Lim. Edos. Term. Chis. Ppia. Tab.	16.00																			
T. C. Jalapa - Jonuta	41.00	1	0	1658	15.6	76.2	1.3	5.3	0.8	0.3	0.2	0.2	0.1	91.8	1.3	6.9	0.085	0.553	18.092838	-92.150452

1 CARR: Coatzacoalcos - Villahermosa

CLAVE: 00528

ruta: MEX-180



Km: 3.00

Tipo: 1

Sent: 0

Km: 159.30

Tipo: 1

Sent: 1

Km: 159.30

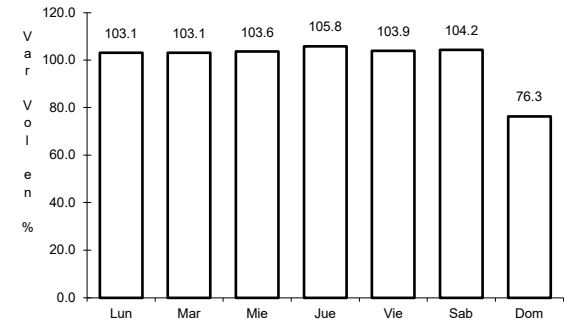
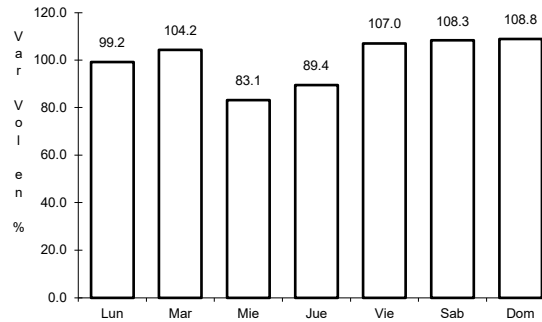
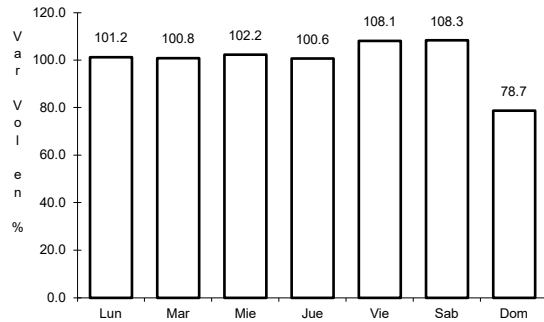
Tipo: 1

Sent: 2

2 CARR: El Suspiro - Tenosique

CLAVE: 00276

ruta: MEX-203



Km: 0.00

Tipo: 3

Sent: 0

Km: 32.60

Tipo: 1

Sent: 0

Km: 53.00

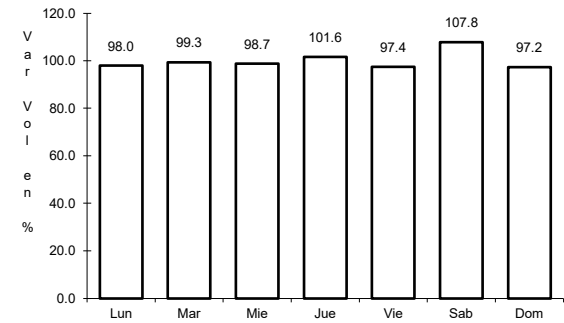
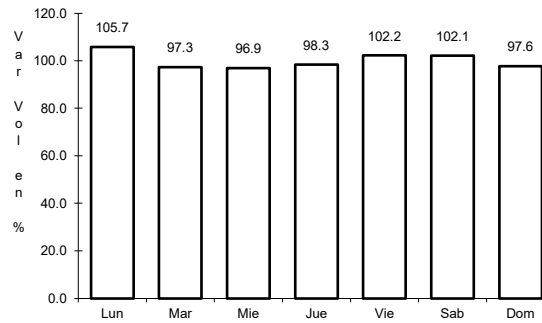
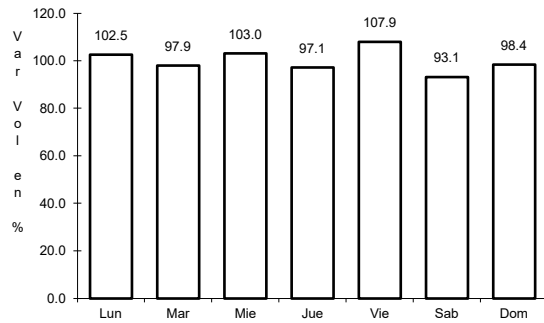
Tipo: 3

Sent: 0

3 CARR: Malpaso - El Bellote

CLAVE: 00137

ruta: MEX-187



Km: 70.12

Tipo: 1

Sent: 0

Km: 134.70

Tipo: 3

Sent: 0

Km: 182.00

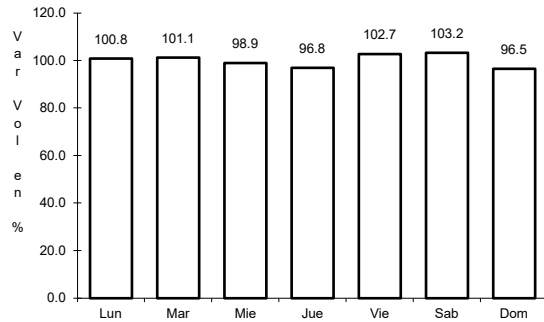
Tipo: 3

Sent: 0

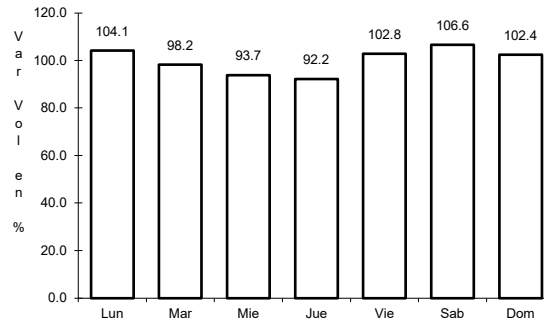
4 CARR: Tenosique - El Ceibo

CLAVE:

ruta: MEX-203



Km: 0.00 Tipo: 3 Sent: 0

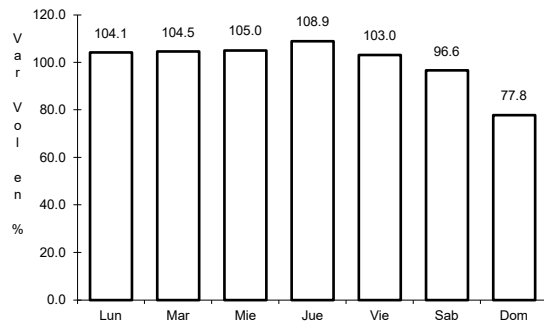


Km: 58.00 Tipo: 1 Sent: 0

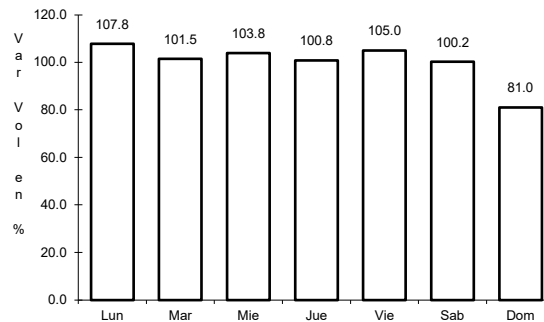
5 CARR: Villahermosa - Cd. del Carmen

CLAVE: 00064

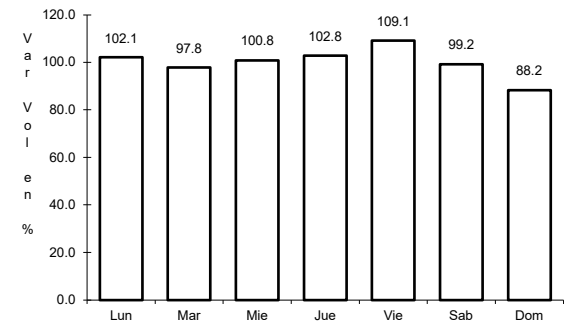
ruta: MEX-180



Km: 4.30 Tipo: 3 Sent: 1



Km: 4.30 Tipo: 3 Sent: 2

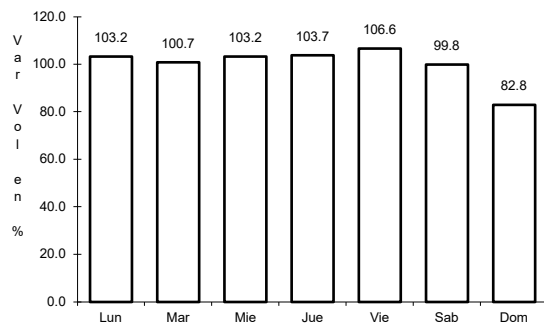


Km: 162.41 Tipo: 1 Sent: 0

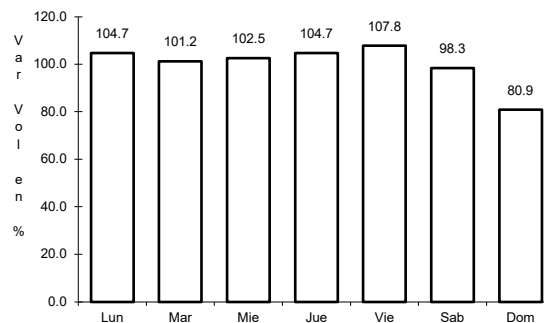
6 CARR: Villahermosa - Escopetazo

CLAVE: 00104

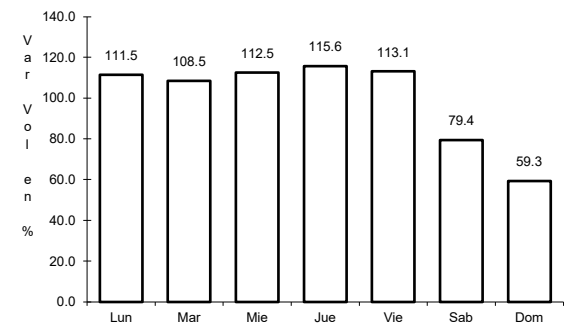
ruta: MEX-195



Km: 0.00 Tipo: 3 Sent: 1



Km: 0.00 Tipo: 3 Sent: 2

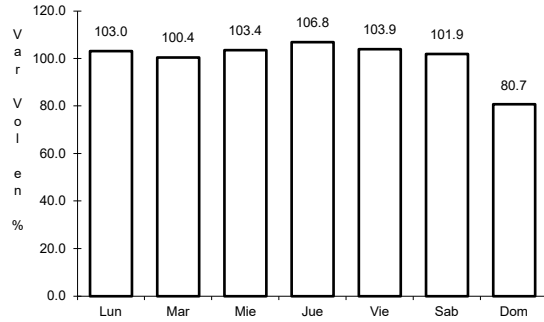


Km: 259.00 Tipo: 1 Sent: 0

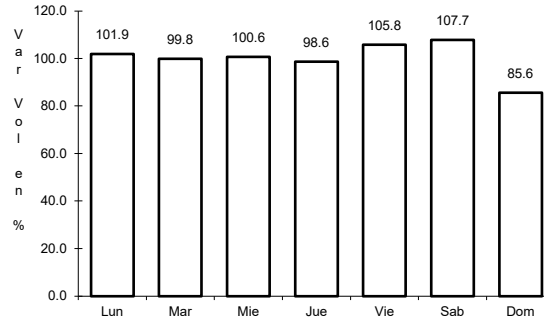
7 CARR: Villahermosa - Francisco Escárcega

CLAVE: 00092

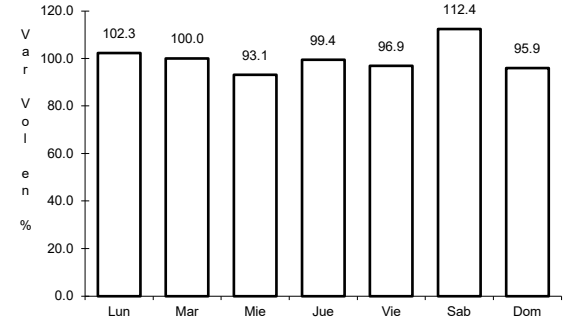
ruta: MEX-186-307



Km: 0.00 Tipo: 3 Sent: 1



Km: 0.00 Tipo: 3 Sent: 2

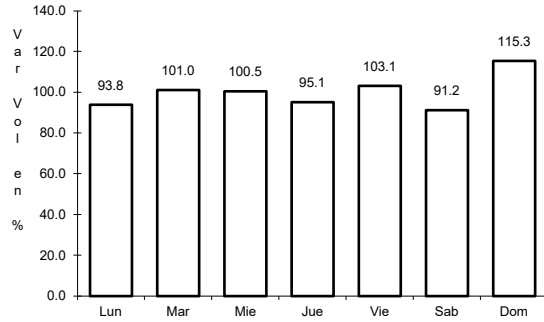


Km: 297.04 Tipo: 1 Sent: 0

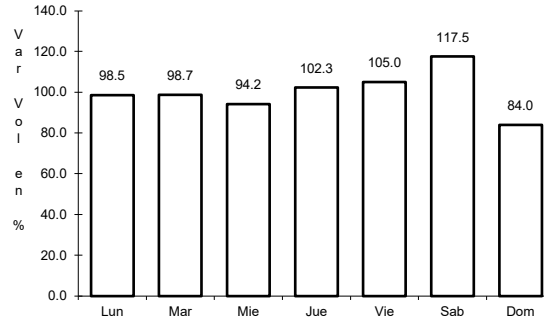
8 CARR: Ent. Agua Dulce - Cárdenas (Cuota)

CLAVE: 00010

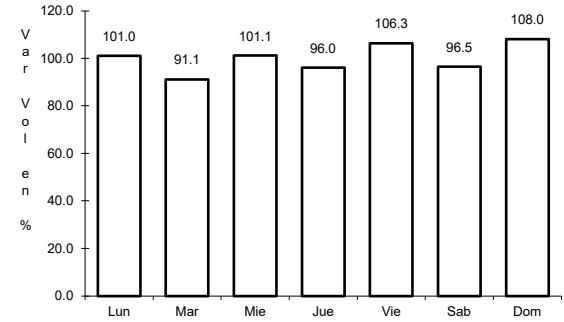
ruta: MEX-180D



Km: 69.50 Tipo: 1 Sent: 1



Km: 69.50 Tipo: 1 Sent: 2

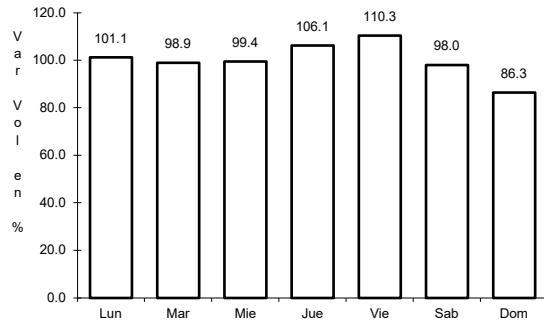


Km: 69.50 Tipo: 3 Sent: 1

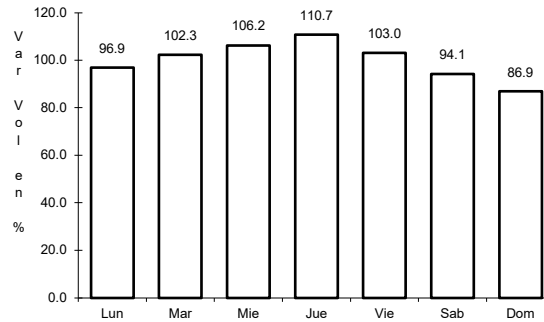
9 CARR: Las Choapas - Ocozocoautla (Cuota)

CLAVE: 00077

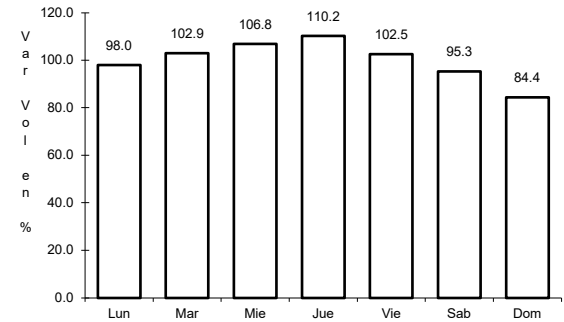
ruta: MEX-187D



Km: 0.00 Tipo: 3 Sent: 0



Km: 123.79 Tipo: 1 Sent: 0

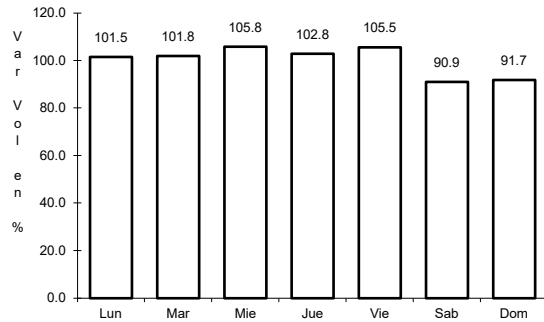


Km: 197.50 Tipo: 1 Sent: 0

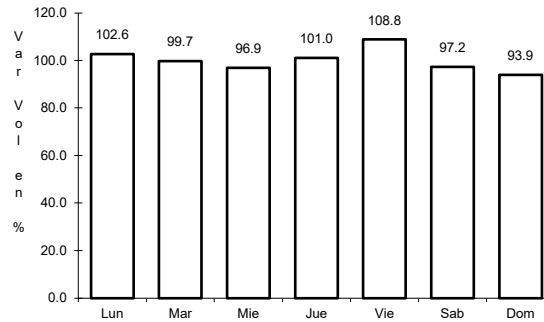
10 CARR: Libramiento de Villahermosa (Cuota)

CLAVE:

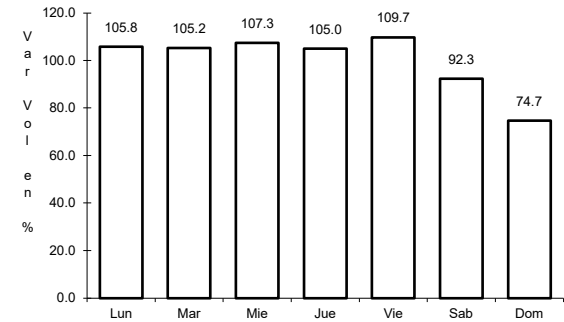
ruta: MEX-180D



Km: 0.00 Tipo: 3 Sent: 1



Km: 0.00 Tipo: 3 Sent: 2

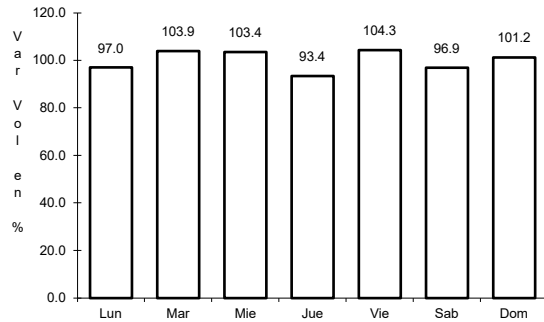


Km: 21.70 Tipo: 3 Sent: 1

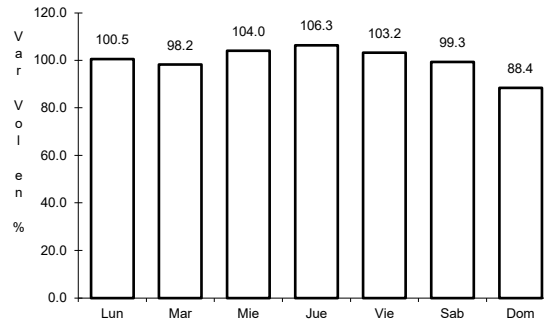
11 CARR: Benito Juárez - Agua Dulce

CLAVE: 00202

ruta: TAB-VER



Km: 0.00 Tipo: 3 Sent: 0

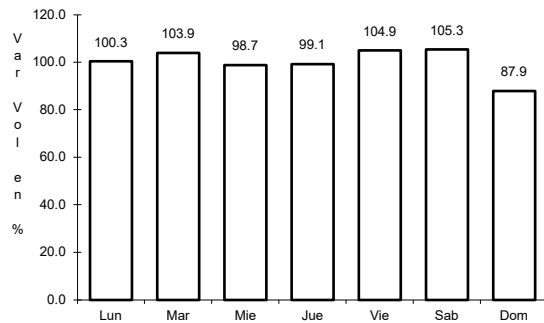


Km: 16.80 Tipo: 1 Sent: 0

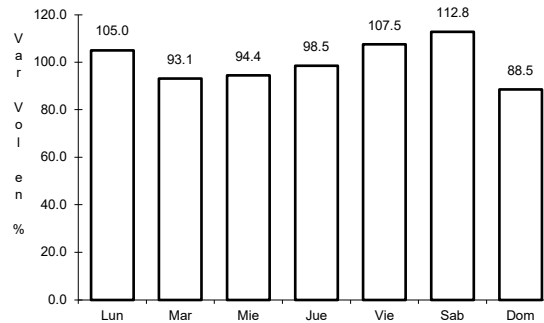
12 CARR: Benito Juárez - Tepetitán

CLAVE: 27204

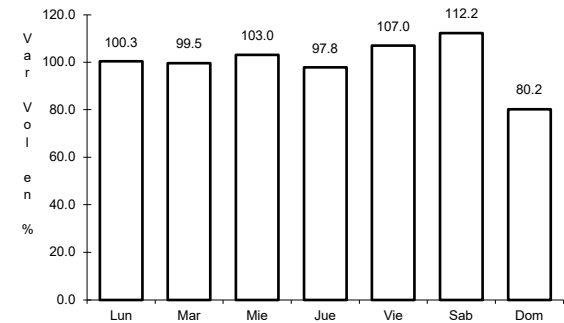
ruta: TAB



Km: 1.50 Tipo: 3 Sent: 0



Km: 18.50 Tipo: 1 Sent: 0

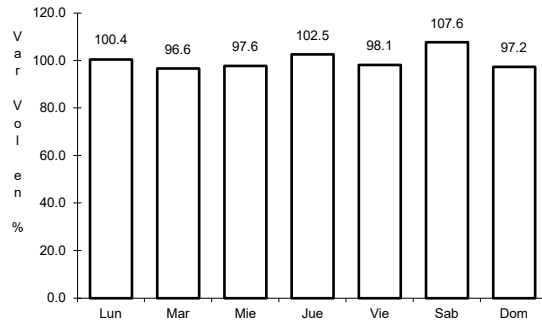


Km: 20.00 Tipo: 1 Sent: 0

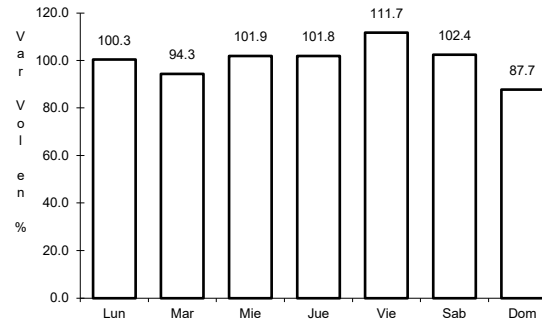
13 CARR: Cacaos - La Granja

CLAVE: 27002

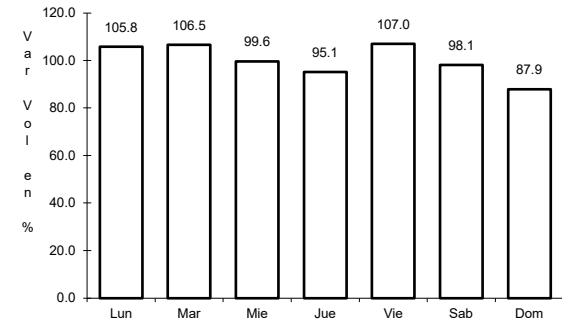
ruta: TAB



Km: 0.00 Tipo: 3 Sent: 0



Km: 16.00 Tipo: 3 Sent: 0

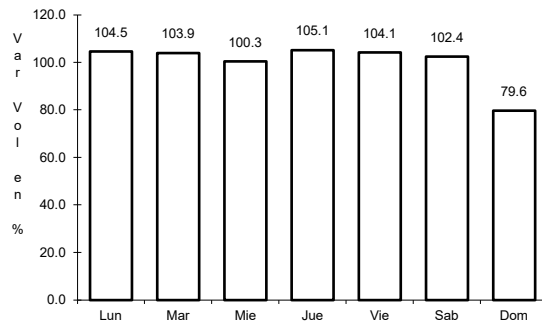


Km: 39.00 Tipo: 1 Sent: 0

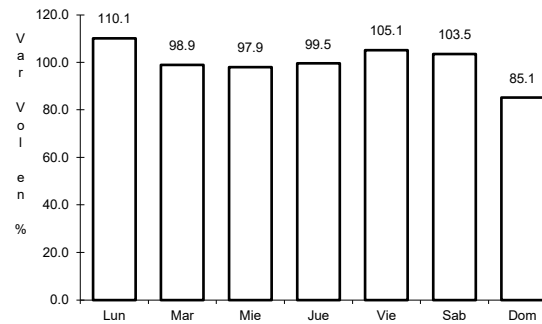
14 CARR: Cárdenas - Paraíso

CLAVE: 27117

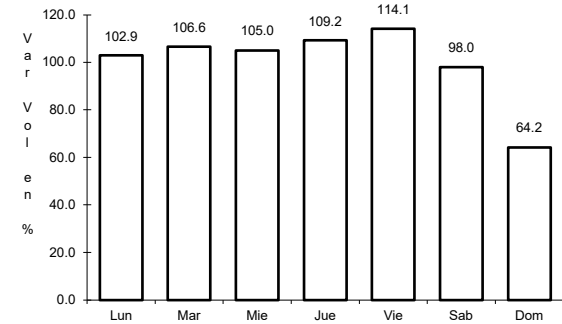
ruta: TAB



Km: 0.00 Tipo: 3 Sent: 0



Km: 22.00 Tipo: 1 Sent: 0

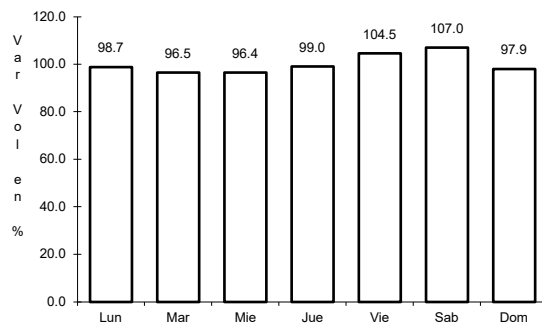


Km: 52.00 Tipo: 1 Sent: 0

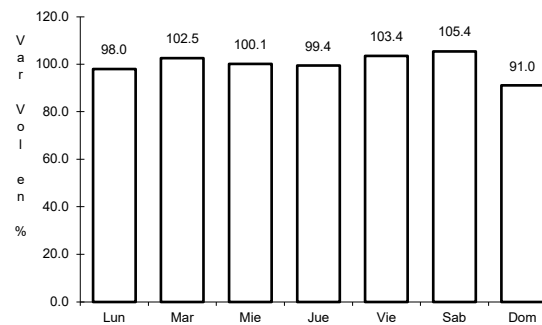
15 CARR: Chichicapa - Ent. La Libertad

CLAVE: 27100

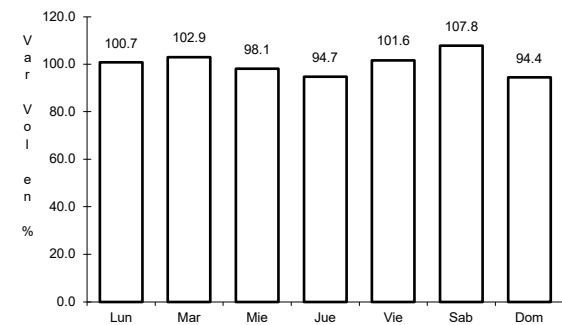
ruta: TAB



Km: 0.00 Tipo: 3 Sent: 0



Km: 10.00 Tipo: 3 Sent: 0

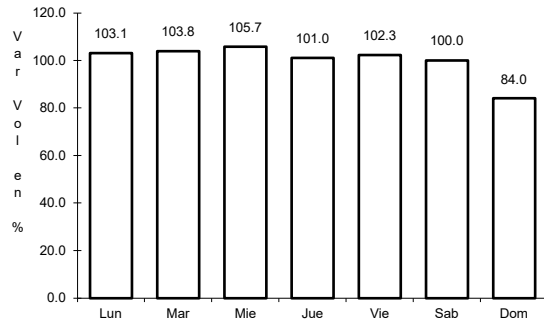


Km: 18.00 Tipo: 1 Sent: 0

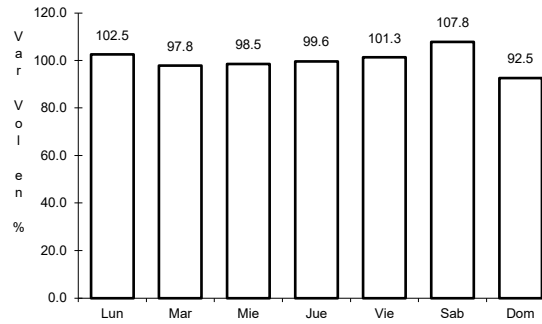
16 CARR: Comalcalco - El Golpe

CLAVE: 27102

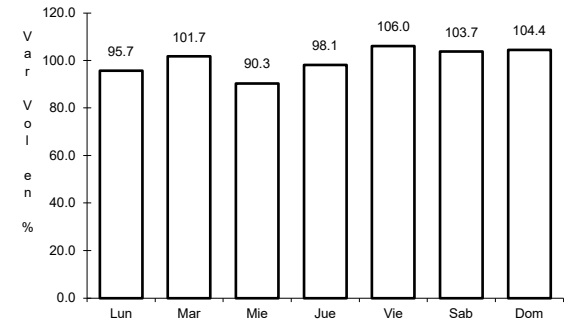
ruta: TAB



Km: 0.00 Tipo: 3 Sent: 0



Km: 15.00 Tipo: 1 Sent: 0

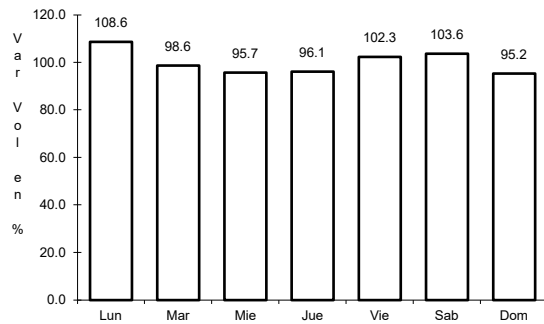


Km: 51.60 Tipo: 1 Sent: 0

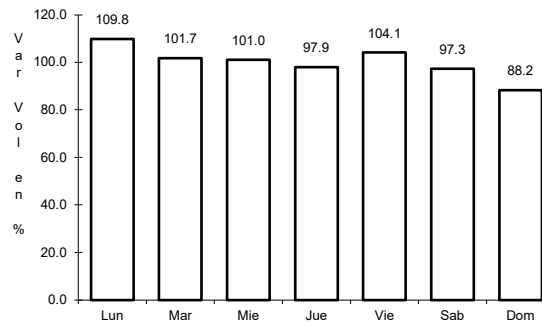
17 CARR: El Bellote - Santa Cruz

CLAVE: 27105

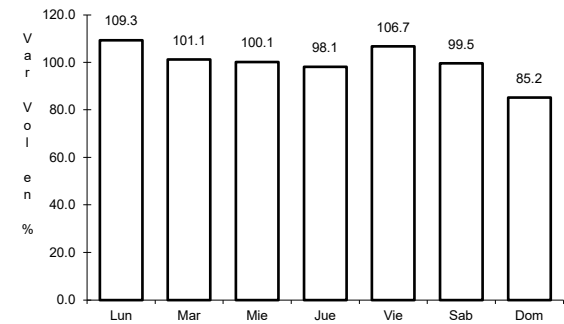
ruta: TAB



Km: 0.00 Tipo: 3 Sent: 0



Km: 35.00 Tipo: 1 Sent: 0

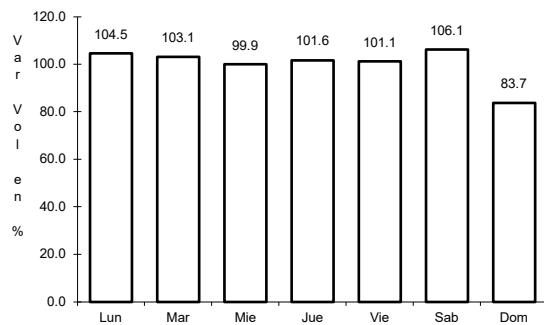


Km: 40.00 Tipo: 1 Sent: 0

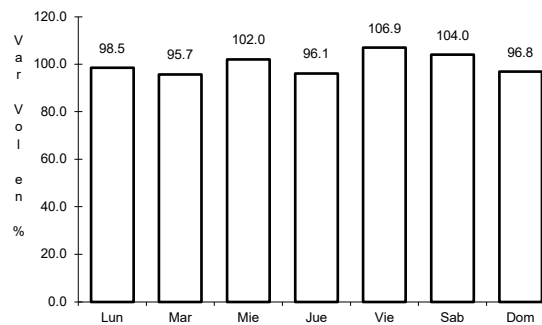
18 CARR: Ent. Emiliano Zapata - La Libertad

CLAVE: 00062

ruta: CHIS-TAB



Km: 0.00 Tipo: 3 Sent: 0

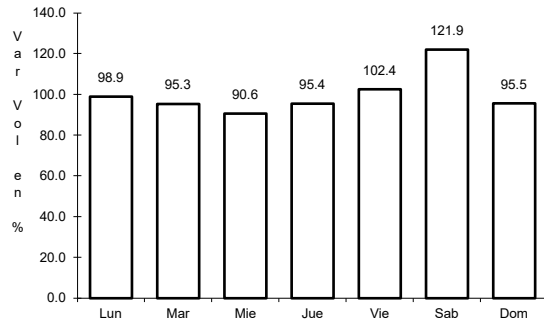


Km: 10.00 Tipo: 1 Sent: 0

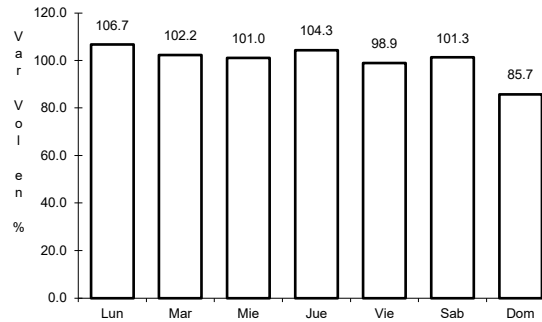
19 CARR: Estación Macuspana - Vernet

CLAVE: 27091

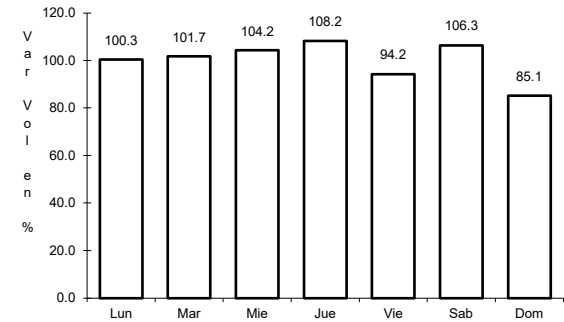
ruta: TAB-041



Km: 11.00 Tipo: 1 Sent: 0



Km: 20.50 Tipo: 3 Sent: 0

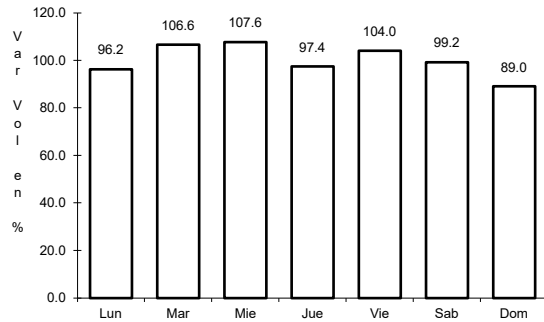


Km: 32.50 Tipo: 1 Sent: 0

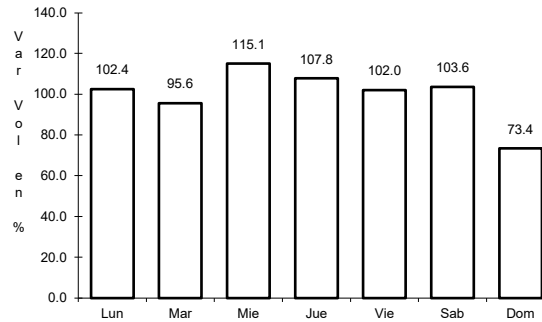
20 CARR: Frontera - T. C. (Jalapa - Jonuta)

CLAVE: 27081

ruta: TAB



Km: 1.00 Tipo: 3 Sent: 0

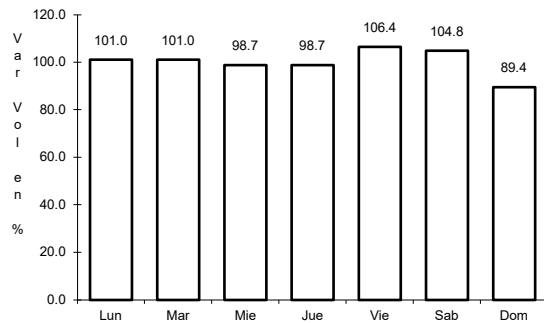


Km: 123.00 Tipo: 1 Sent: 0

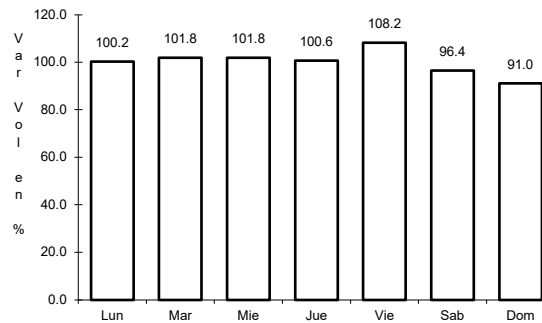
21 CARR: Gregorio Méndez Magaña - Reforma de Ocampo

CLAVE: 00103

ruta: CHIS



Km: 0.00 Tipo: 3 Sent: 0

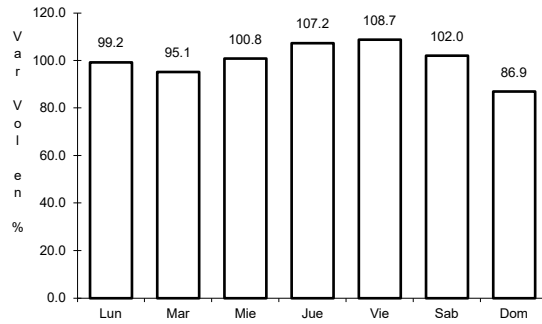


Km: 21.00 Tipo: 1 Sent: 0

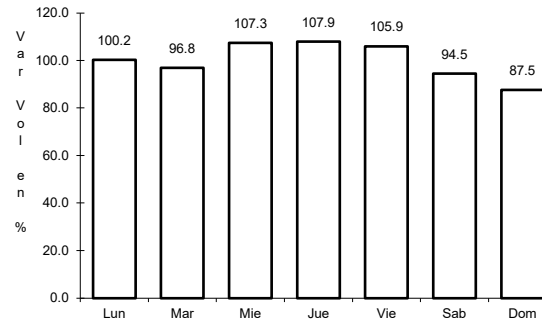
22 CARR: Jalapa - Jonuta

CLAVE: 27107

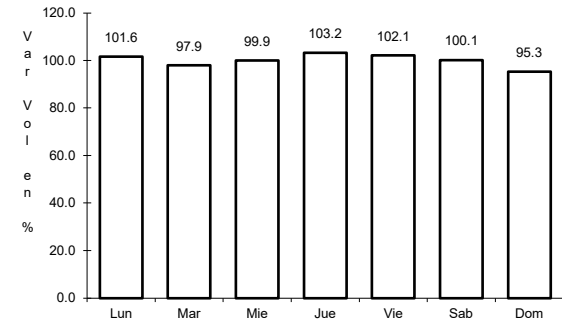
ruta: TAB



Km: 0.00 Tipo: 3 Sent: 0



Km: 39.00 Tipo: 1 Sent: 0

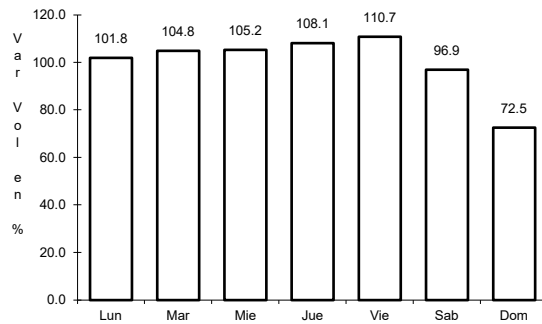


Km: 97.50 Tipo: 1 Sent: 0

23 CARR: Libramiento Sur de Comalcalco

CLAVE:

ruta: TAB

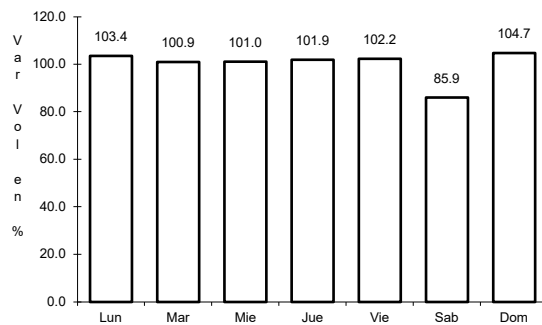


Km: 0.00 Tipo: 3 Sent: 0

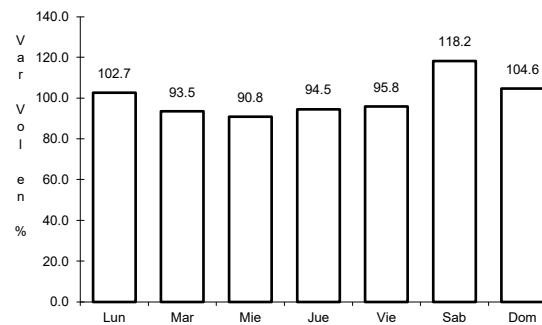
24 CARR: Nicolás Bravo - T. C. (El Bellote - Santa Cruz)

CLAVE: 27010

ruta: TAB



Km: 0.00 Tipo: 3 Sent: 0

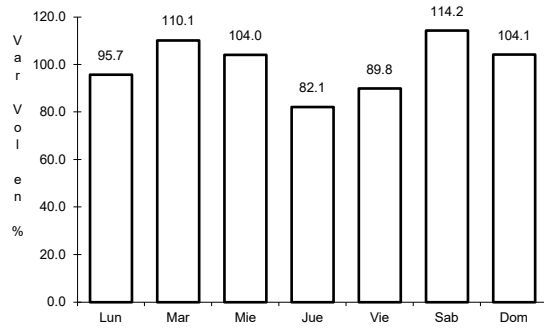


Km: 22.00 Tipo: 1 Sent: 0

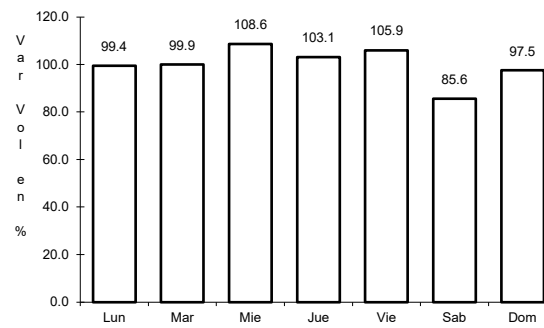
25 CARR: Pailebot - Cuauhtemotzin

CLAVE: 27112

RUTA: TAB



Km: 0.00 Tipo: 3 Sent: 0

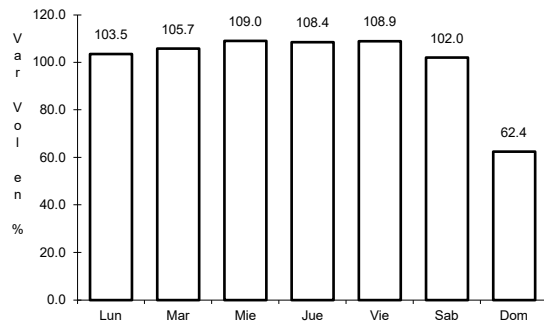


Km: 23.00 Tipo: 1 Sent: 0

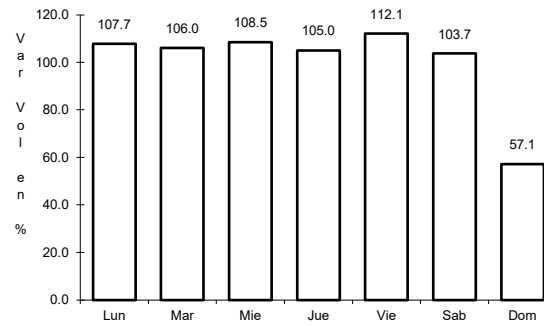
26 CARR: Paraíso - El Limón

CLAVE: 27108

RUTA: TAB



Km: 0.00 Tipo: 3 Sent: 0

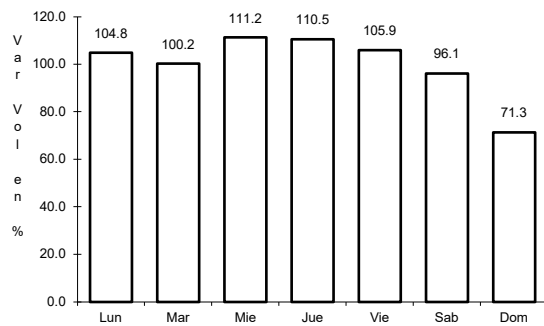


Km: 6.00 Tipo: 1 Sent: 0

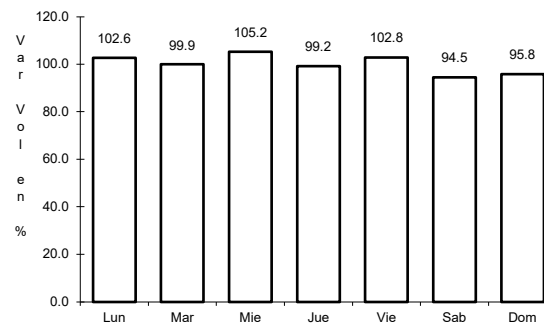
27 CARR: Paso de Cunduacán - Estación Juárez

CLAVE: 00588

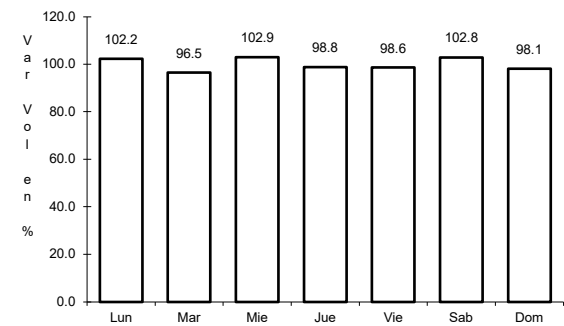
RUTA: TAB-CHIS



Km: 0.00 Tipo: 3 Sent: 0



Km: 18.00 Tipo: 3 Sent: 0

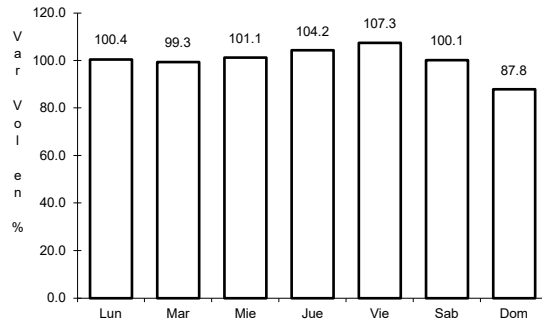


Km: 57.80 Tipo: 1 Sent: 0

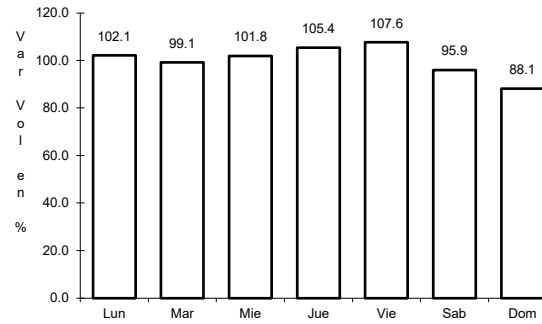
28 CARR: Playas del Rosario - Teapa

CLAVE: 27203

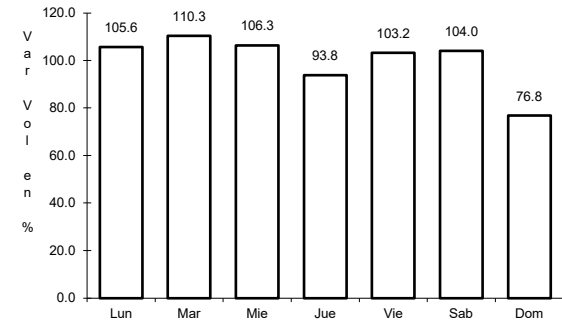
ruta: TAB-001



Km: 0.00 Tipo: 3 Sent: 1



Km: 0.00 Tipo: 3 Sent: 2

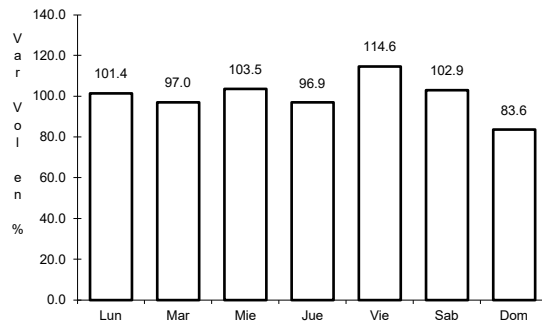


Km: 54.00 Tipo: 1 Sent: 0

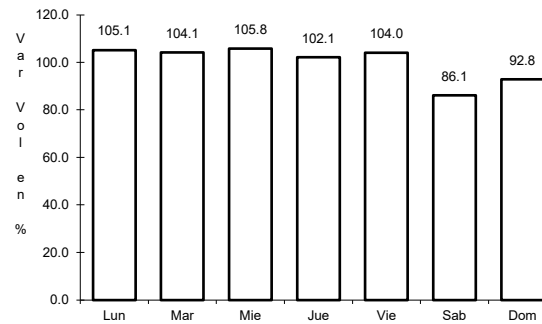
29 CARR: Ramal a Balancan

CLAVE: 27078

ruta: TAB



Km: 0.00 Tipo: 3 Sent: 0

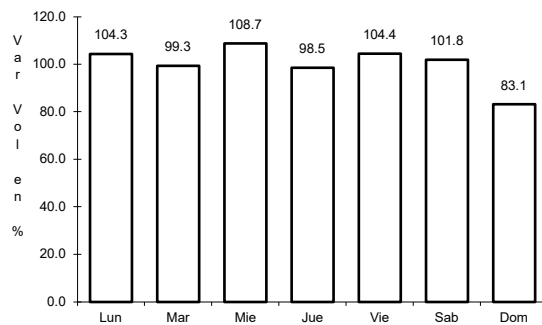


Km: 24.00 Tipo: 1 Sent: 0

30 CARR: Ramal a La Venta

CLAVE: 27078

ruta: TAB

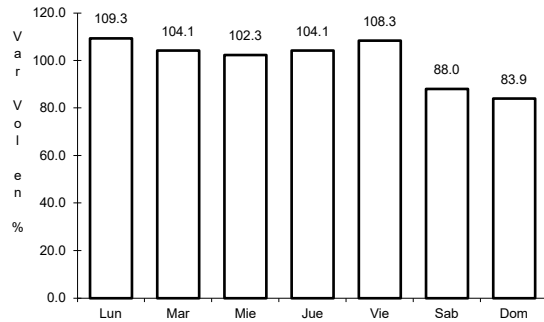


Km: 0.00 Tipo: 3 Sent: 0

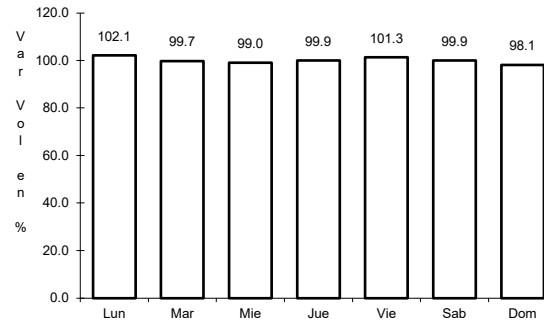
31 CARR: Ramal a Lázaro Cárdenas

CLAVE: 27208

ruta: TAB



Km: 0.00 Tipo: 3 Sent: 0

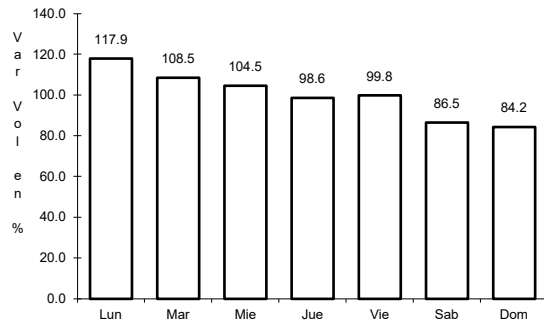


Km: 14.00 Tipo: 1 Sent: 0

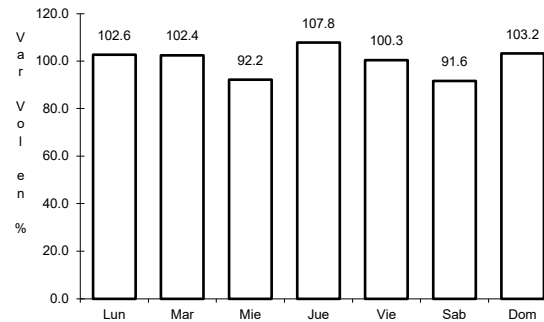
32 CARR: Ramal a Libertad

CLAVE: 27205

ruta: TAB



Km: 0.00 Tipo: 3 Sent: 0

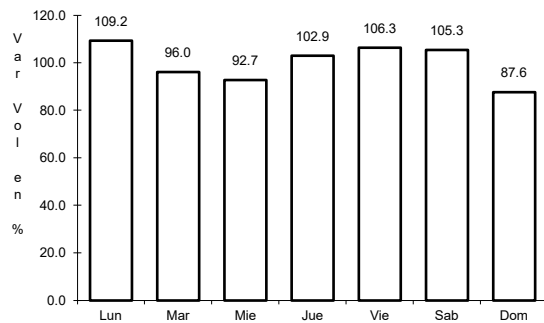


Km: 10.00 Tipo: 1 Sent: 0

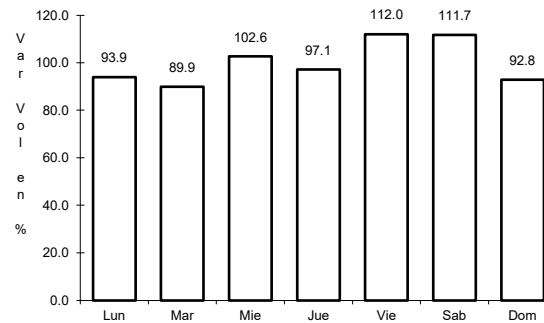
33 CARR: Ramal a Salto del Agua

CLAVE: 00069

ruta: TAB-CHIS



Km: 0.00 Tipo: 3 Sent: 0

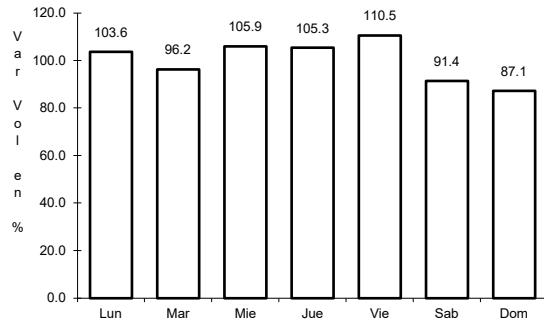


Km: 17.00 Tipo: 1 Sent: 0

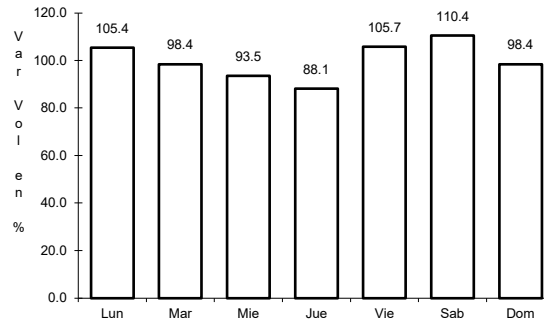
34 CARR: Ramal a San Antonio

CLAVE: 27003

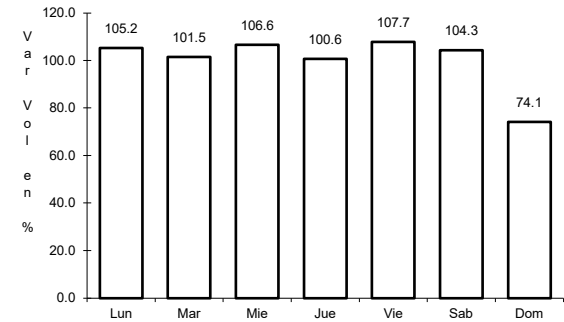
RUTA: TAB



Km: 0.00 Tipo: 3 Sent: 0



Km: 24.00 Tipo: 1 Sent: 0

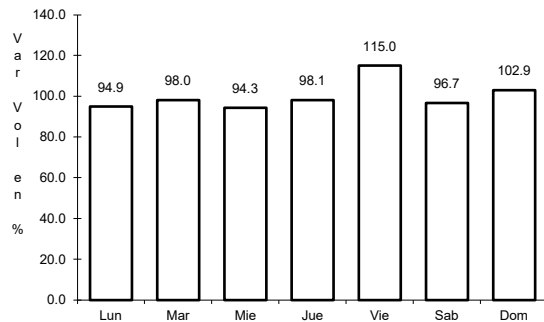


Km: 24.00 Tipo: 3 Sent: 0

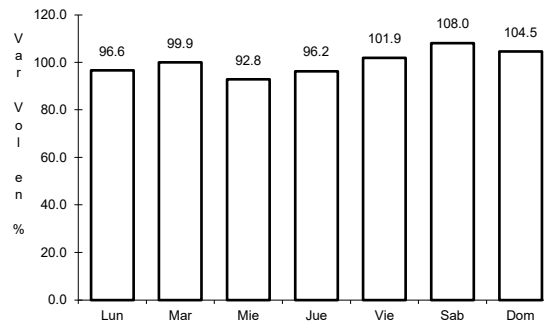
35 CARR: Ramal a Sánchez Magallanes

CLAVE: 27016

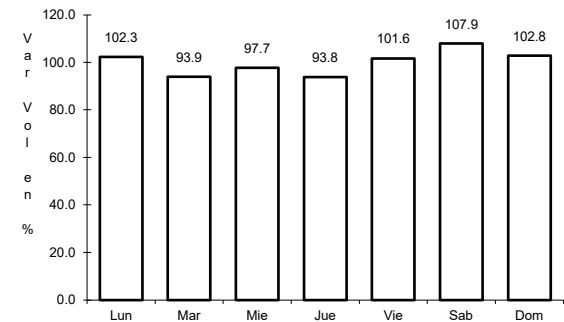
RUTA: TAB



Km: 0.00 Tipo: 3 Sent: 0



Km: 13.00 Tipo: 1 Sent: 0

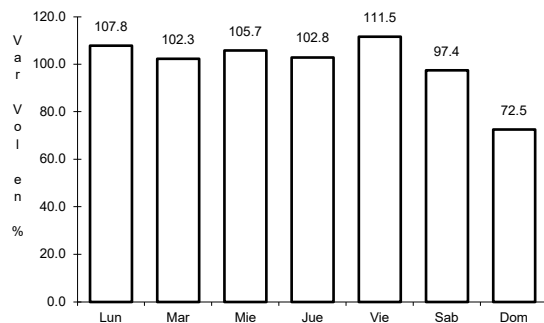


Km: 33.00 Tipo: 1 Sent: 0

36 CARR: Ramal a Tamulte de Las Sabanas

CLAVE: 27080

RUTA: TAB

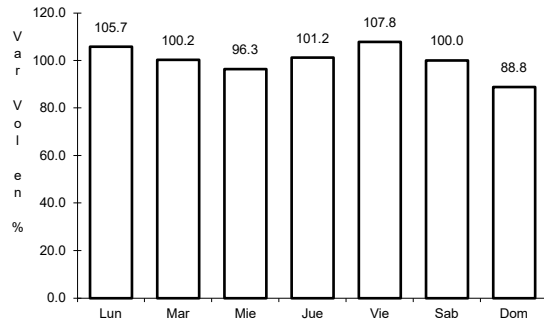


Km: 0.00 Tipo: 3 Sent: 0

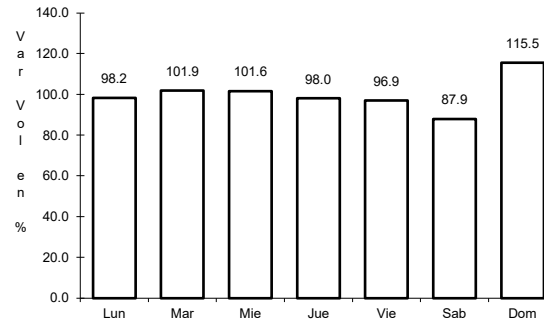
37 CARR: Ramal a Tapijulapa

CLAVE: 27200

RUTA: TAB



Km: 0.00 Tipo: 3 Sent: 0

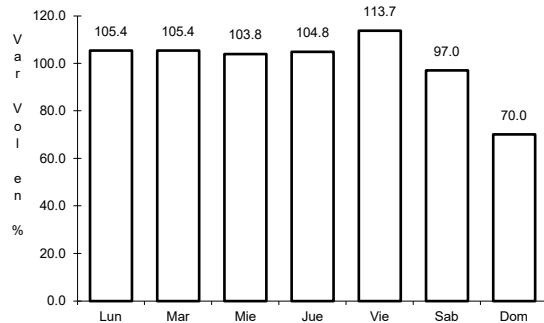


Km: 20.00 Tipo: 1 Sent: 0

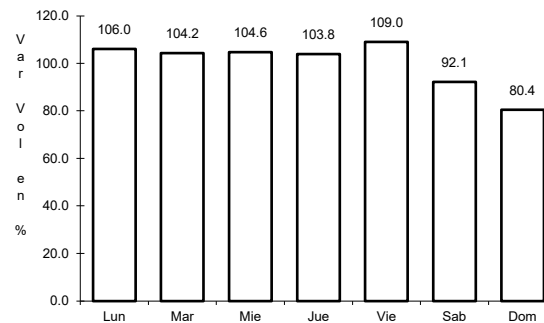
38 CARR: Reforma - Dos Bocas

CLAVE: 27200

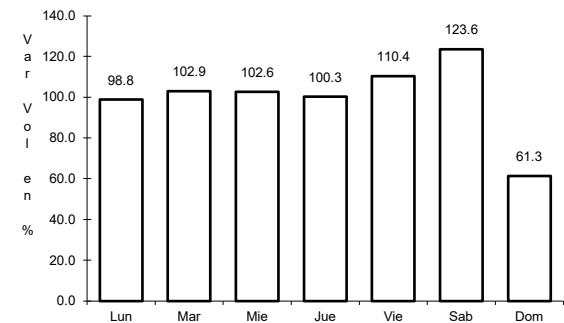
RUTA: TAB



Km: 0.00 Tipo: 3 Sent: 1



Km: 0.00 Tipo: 3 Sent: 2

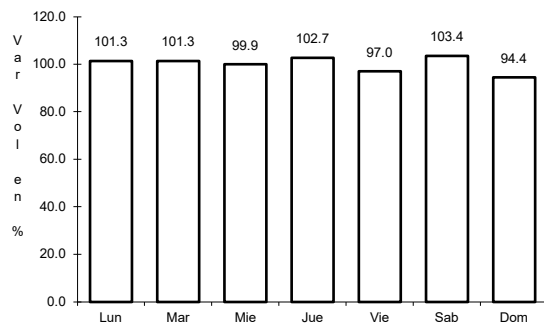


Km: 53.00 Tipo: 1 Sent: 1

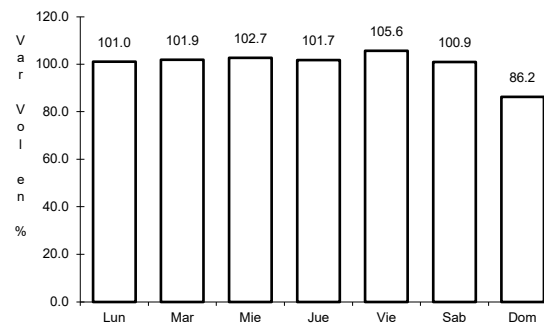
39 CARR: Reyes Hernández - Villa Aldama

CLAVE: 27119

RUTA: TAB



Km: 0.00 Tipo: 3 Sent: 0

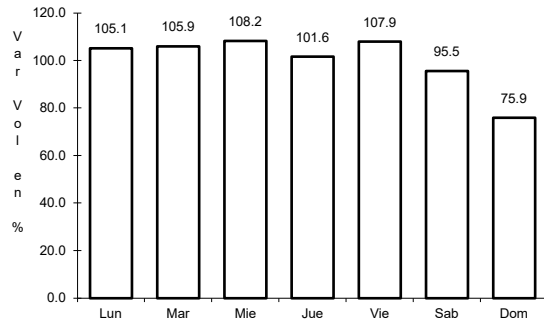


Km: 9.00 Tipo: 1 Sent: 0

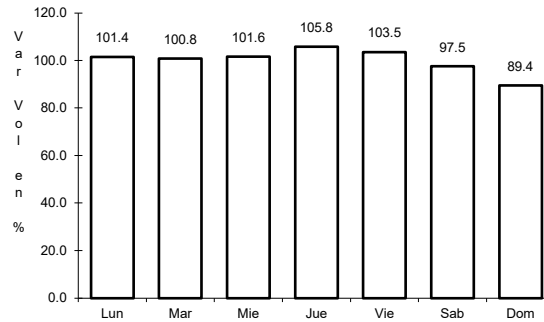
40 CARR: Samaria - Amatitán

CLAVE: 27114

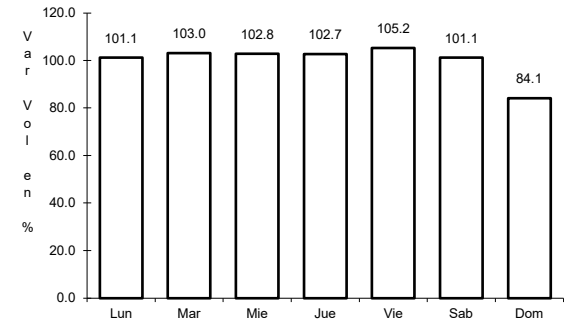
RUTA: TAB



Km: 0.00 Tipo: 3 Sent: 0



Km: 17.00 Tipo: 1 Sent: 0

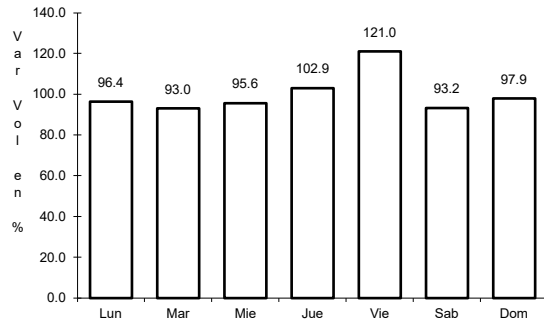


Km: 31.40 Tipo: 1 Sent: 0

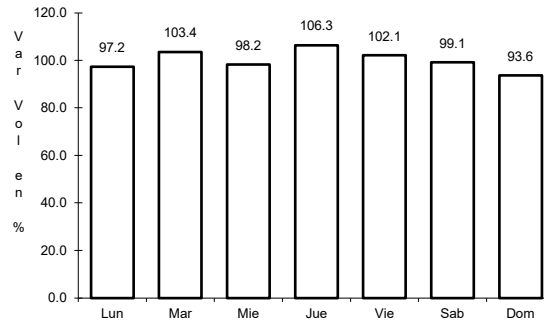
41 CARR: T. C. (Cárdenas - Paraíso) - Carlos Green

CLAVE: 27111

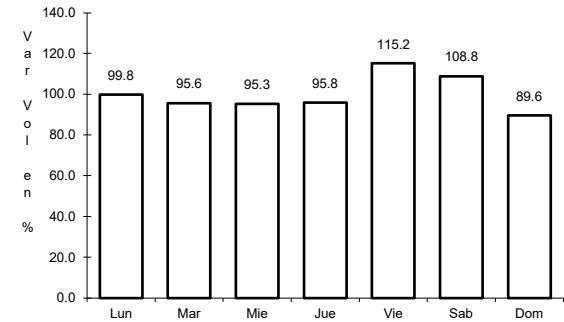
RUTA: TAB



Km: 0.00 Tipo: 3 Sent: 0



Km: 21.50 Tipo: 3 Sent: 0

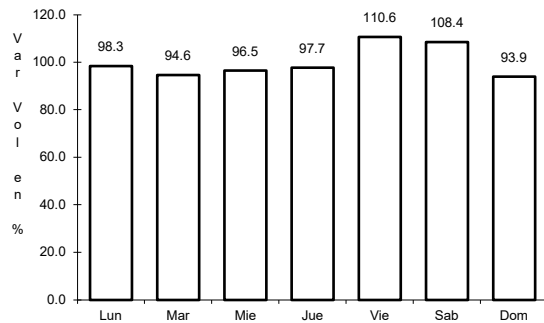


Km: 30.70 Tipo: 1 Sent: 0

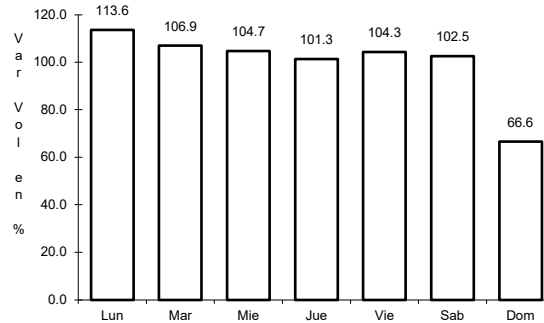
42 CARR: Tierra Nueva - Francisco Rueda

CLAVE: 27110

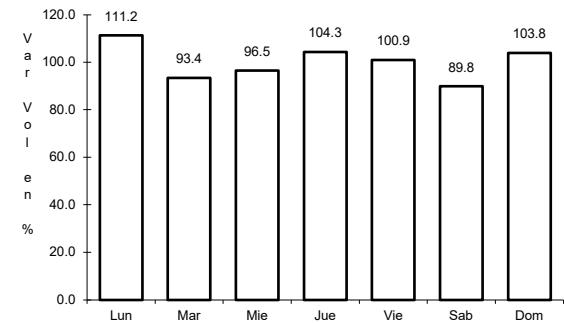
RUTA: TAB



Km: 0.00 Tipo: 3 Sent: 0



Km: 31.00 Tipo: 1 Sent: 0

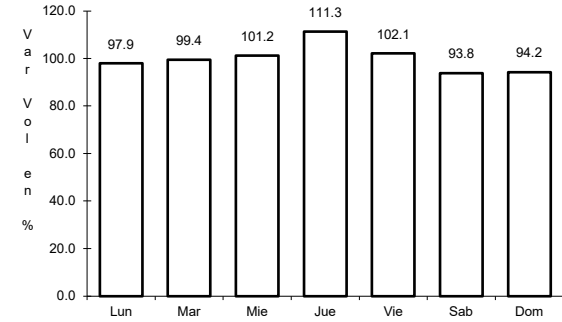
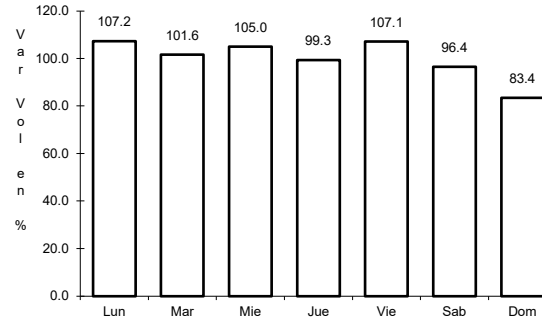
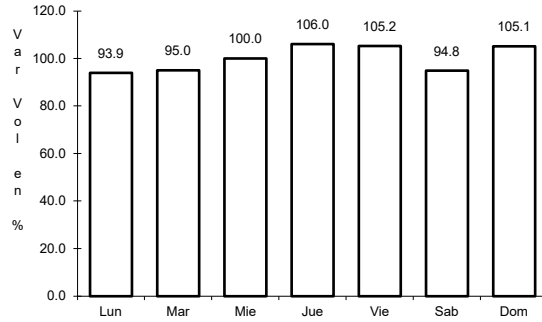


Km: 71.00 Tipo: 1 Sent: 0

43 CARR: Tulipán - Cunduacán

CLAVE: 27115

ruta: TAB



Km: 0.00 Tipo: 3 Sent: 0

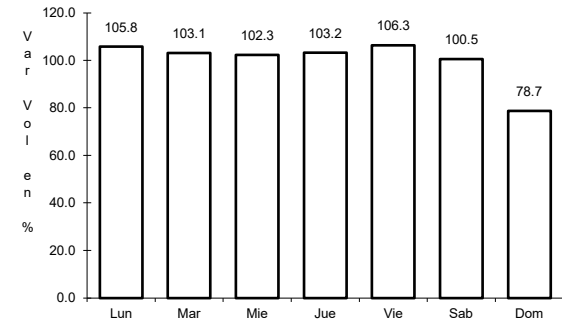
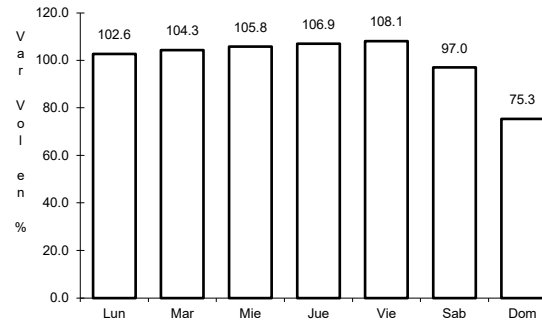
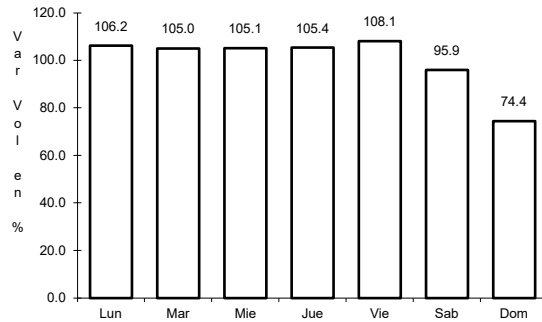
Km: 14.00 Tipo: 1 Sent: 0

Km: 15.00 Tipo: 1 Sent: 0

44 CARR: Villahermosa - Comalcalco

CLAVE: 27021

ruta: TAB



Km: 0.00 Tipo: 3 Sent: 1

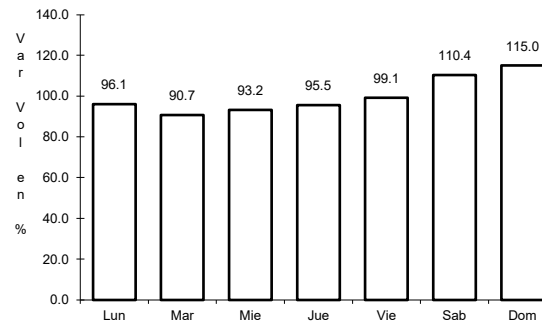
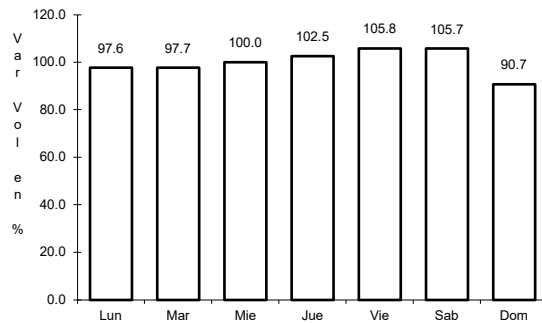
Km: 0.00 Tipo: 3 Sent: 2

Km: 50.70 Tipo: 1 Sent: 0

45 CARR: Villahermosa - Luis Gil Pérez

CLAVE: 27206

ruta: TAB



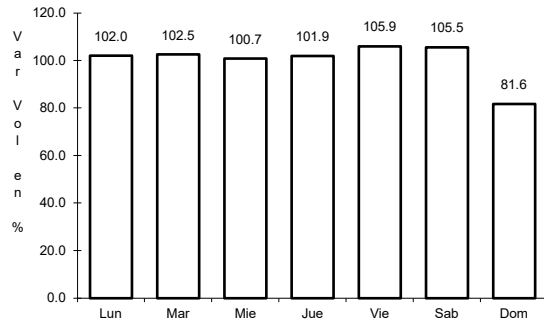
Km: 0.00 Tipo: 3 Sent: 0

Km: 22.00 Tipo: 1 Sent: 0

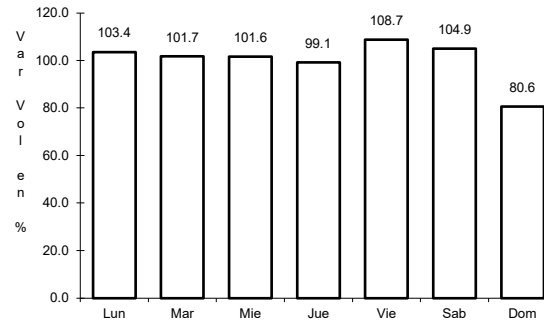
46 CARR: Villahermosa - T. C. (P. de Cunduacán - Estación Juárez)

CLAVE: 27106

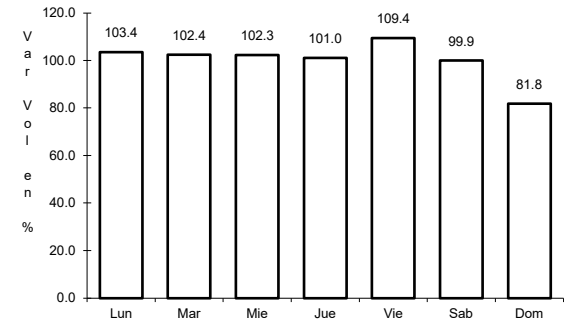
RUTA: TAB



Km: 0.00 Tipo: 3 Sent: 0



Km: 19.00 Tipo: 3 Sent: 0

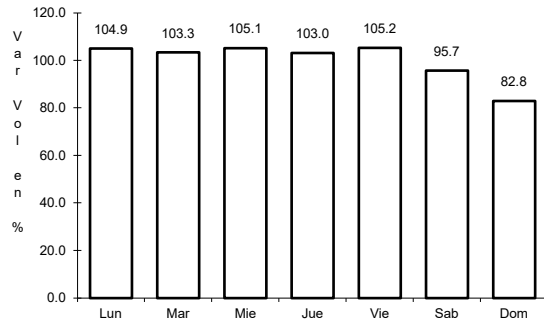


Km: 25.20 Tipo: 1 Sent: 0

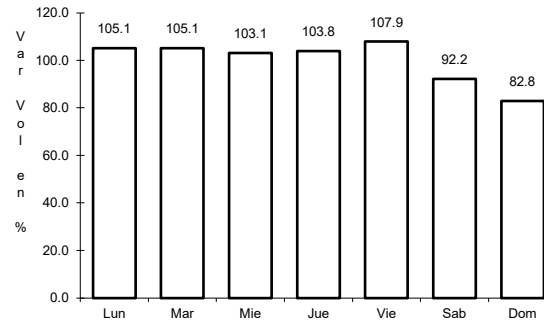
47 CARR: Zapatero - T. C. (Jalapa - Jonuta)

CLAVE: 00061

RUTA: CHIS-TAB



Km: 0.00 Tipo: 3 Sent: 0



Km: 41.00 Tipo: 1 Sent: 0